

WAAS CH <b>69343</b> <b>W30D</b>	APP CRS <b>303°</b>	Rwy Idg <b>9300</b> TDZE <b>1384</b> Apt Elev <b>1384</b>
--	------------------------	---

RNAV (GPS) RWY 30R  
MESA GATEWAY (IWA)

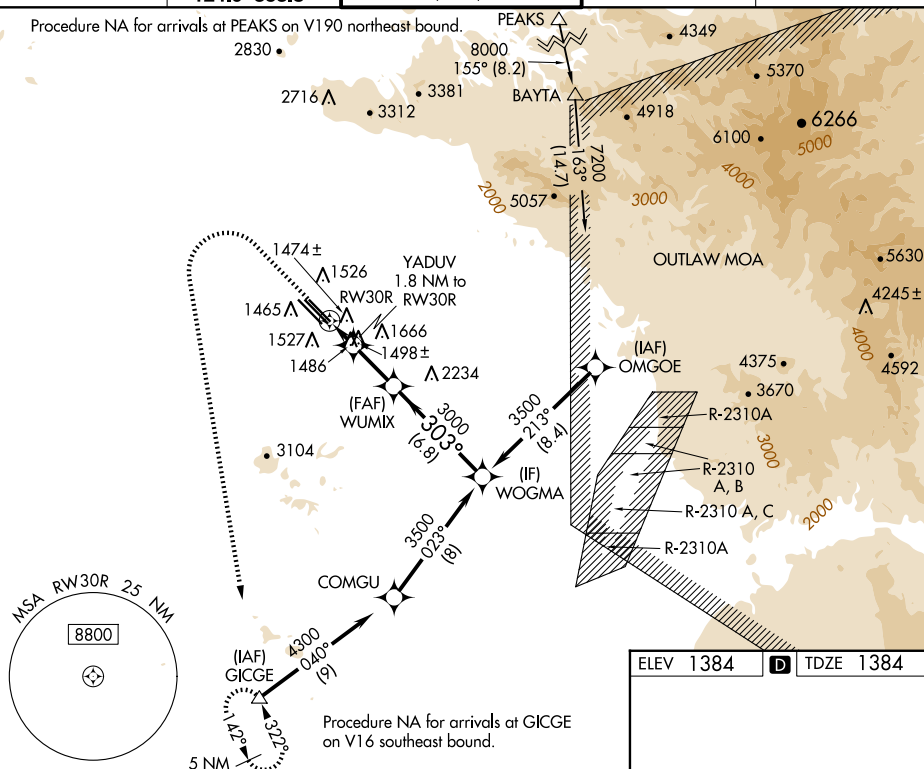
RNP APCH-GPS.

**T** For uncompensated Baro-VNAV systems, LNAV/VNAV NA  
**A** below -17°C or above 54°C.

**MISSED APPROACH:** Climb to 2800 then climbing left turn to 5000 direct to GICGE and hold.

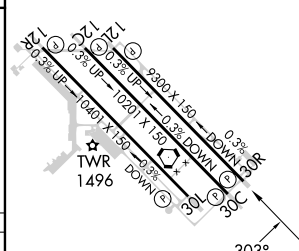
ATIS 133.5 270.275	PHOENIX APP CON 124.9 353.8	GATEWAY TOWER ★ 120.6 (CTAF) 289.4	GND CON 128.25 275.8	CLNC DEL 135.05
-----------------------	--------------------------------	---------------------------------------	-------------------------	--------------------

### Procedure NA for arrivals at PEAKS on V190 northeast bound.



Procedure NA for arrivals at GICGE  
on V16 southeast bound.

		VGSI and RNAV glidepath not coincident (VGSI Angle 3.00/TCH 75). YADUV 1.8 NM to RW30R WUMIX 3000 WOGMA 3500	
*LNAV only *0.9 NM to RW30R 0.9 NM 0.9 NM 3.1 NM 6.8 NM GP 3.00° TCH 55°		2020* 3000 303° 3000	
CATEGORY	A	B	D
LPV DA	1584- <sup>3</sup> / <sub>4</sub> 200 (200- <sup>3</sup> / <sub>4</sub> )		
LNAV/VNAV DA	1634- <sup>3</sup> / <sub>4</sub> 250 (300- <sup>3</sup> / <sub>4</sub> )		
LNAV MDA	1740-1 356 (400-1)		
CIRCLING	1840-1 456 (500-1)	1880-1 <sup>1</sup> / <sub>2</sub> 496 (500-1 <sup>1</sup> / <sub>2</sub> )	2000-2 616 (700-2)



MIRL Rwy 12R-30L  
HIRL Rwys 12L-30R and 12C-30C  
REIL Rwys 12L and 30R

RNAV (GPS) RWY 30R

SW-4, 10 JUL 2025 to 07 AUG 2025