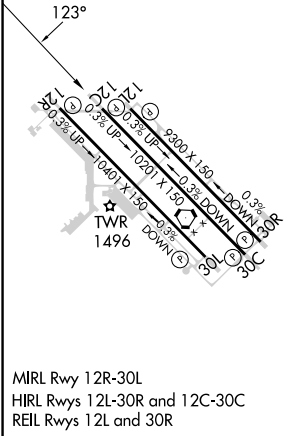
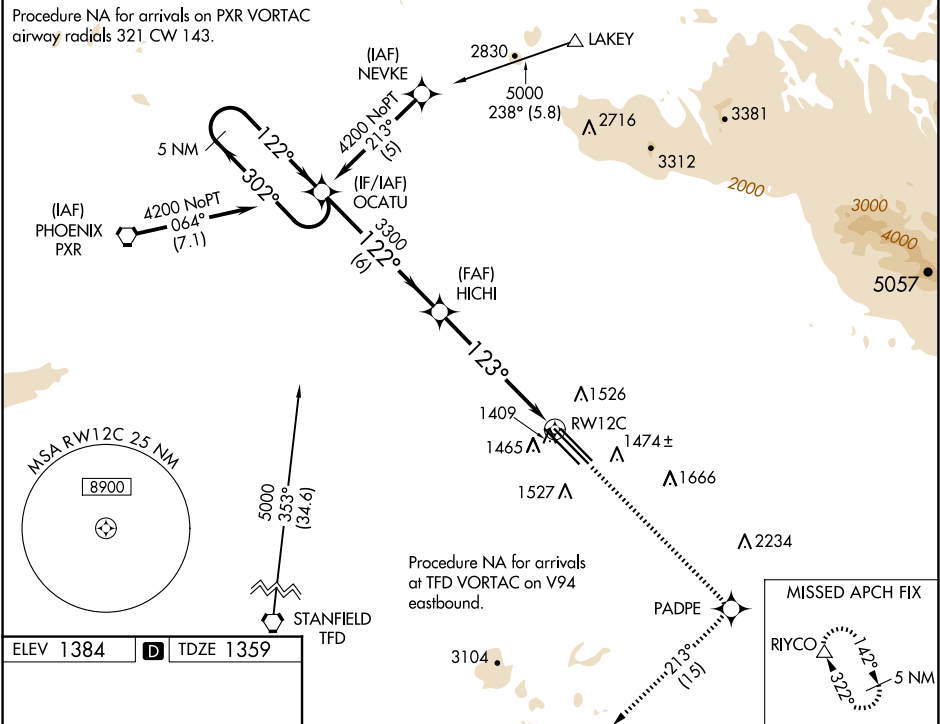


WAAS CH <b>58200</b> <b>W12A</b>	APP CRS <b>123°</b>	Rwy Idg <b>10201</b> TDZE <b>1359</b> Apt Elev <b>1384</b>
--	------------------------	--

RNAV (GPS) RWY 12C  
MESA GATEWAY (IWA)

<p><b>⚠</b> DME/DME RNP-0.3 NA. For uncompensated Baro-VNAV systems LNAV/VNAV NA below -17°C (2°F) or above 46°C (115°F).</p>	<p>MISSED APPROACH: Climb to 5000 direct PADPE and on 213° track to RIYCO and hold.</p>
---	---

ATIS <b>133.5 270.275</b>	PHOENIX APP CON <b>124.9 353.8</b>	GATEWAY TOWER ★ <b>120.6 (CTAF) 289.4</b>	GND CON <b>128.25 275.8</b>	CLNC DEL <b>135.05</b>
------------------------------	---------------------------------------	--	--------------------------------	---------------------------



5 NM Holding Pattern	OCATU	5000	PADPE	213° tr	RIYCO
4200	302°	122°	3300	123°	RW12C
GP 3.00°	TCH 50	6 NM	4.8 NM	1.1	
CATEGORY	A	B	C	D	E
LPV DA	1609-1 250 (300-1)				
LNAV/VNAV DA	1686-1¼ 327 (400-1¼)				
LNAV MDA	1740-1 381 (400-1)		1740-1¼ 381 (400-1¼)		
CIRCLING	1840-1¼ 456 (500-1¼)	1880-1½ 496 (500-1½)	2000-2 616 (700-2)	2020-2¼ 636 (700-2¼)	