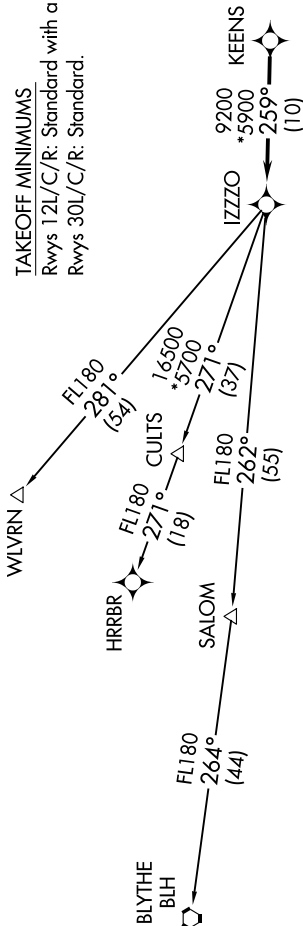


NOTE: Turboprops and turboprops only.
NOTE: Aircraft requesting FL220 and below must file BLYTHE Transition.
NOTE: Turboprops landing LAX, file WLVRN Transition.
NOTE: Aircraft landing other than LAX and turboprops landing at LAX: Requesting FL240 and above, file HRRBR Transition.
NOTE: Aircraft departing KGEU and KGYR ATC assigned only.

TAKEOFF MINIMUMS

Rwys 12L/C/R: Standard with a minimum climb of 250'/NM to 3100.
Rwys 30L/C/R: Standard.



**TOP ALTITUDE:
ASSIGNED BY ATC**

PHOENIX DEP CON
124.9 353.8
ATIS
133.5 270.275
CLINC DEL
135.05
GND CON
128.25 275.8
GATEWAY TOWER★
120.6 289.4

DEPARTURE ROUTE DESCRIPTION

... for RADAR vectors to KEENS, then on track 259° to IZZZO, then on (transition).
Maintain ATC assigned altitude, expect filed altitude 3 minutes after departure.

BLYTHE TRANSITION (IZZZO8.BLH)
HRRBR TRANSITION (IZZZO8.HRRBR)
WLVRN TRANSITION (IZZZO8.WLVRN)