

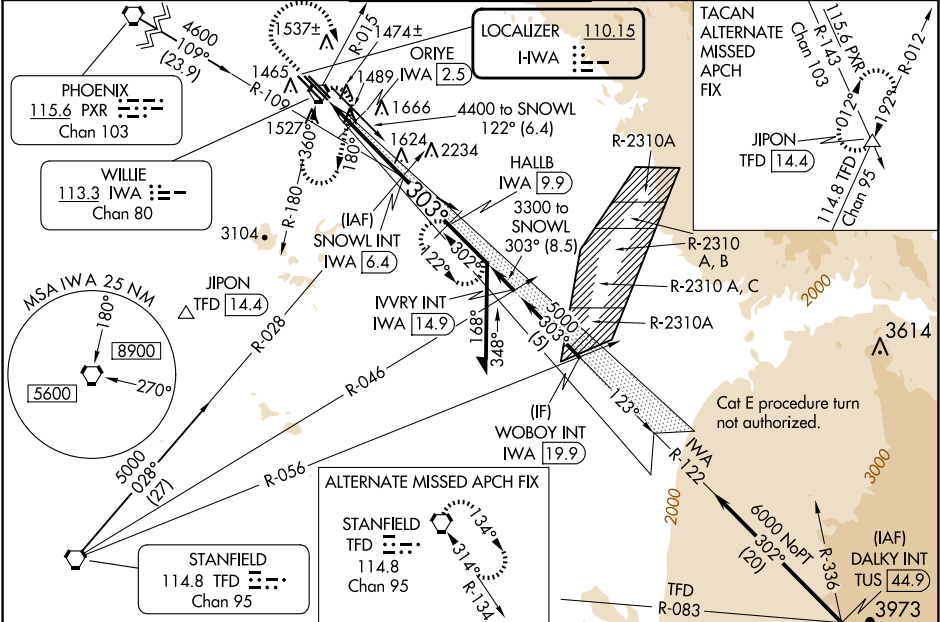
LOC I-WA	APP CRS	Rwy Idg	10201
110.15	303°	TDZE	1380
		Apt Elev	1384

ILS or LOC RWY 30C
MESA GATEWAY (IWA)

When local altimeter setting not received, use Phoenix Sky Harbor Intl altimeter setting and increase S-ILS DA to 1660 feet and all MDA 80 feet, increase S-ILS 30C, S-LOC 30C all Cats and Circling Cats C/D/E visibility ¼ SM.

MISSED APPROACH: Climb to 2800 then climbing right turn to 5000 via heading 145° and IWA VORTAC R-015 to IWA VORTAC and hold, continue climb-in-hold to 5000 (TACAN aircraft continue via IWA VORTAC R-122 to HALLB/9.9 DME and hold, continue climb-in-hold to 5000, hold SE, LT, 302° inbound).

ATIS	PHOENIX APP CON	GATEWAY TOWER ★	GND CON	CLNC DEL
133.5 270.275	124.9 353.8	120.6 (CTAF) 289.4	128.25 275.8	135.05



2800	5000	IWA	IWA	SNOWL INT	Remain within 10 NM
↑	hdg 145°	R-015		IWA 6.4	
VGSI and ILS glidepath not coincident (VGSI Angle 3.00/TCH 49).					
GS 3.00° TCH 41					
1.9 NM 3.9 NM					
CATEGORY	A	B	C	D	E
S-ILS 30C		1580-¾	200 (200-¾)		
S-LOC 30C	1940-1	560 (600-1)	1940-1½ 560 (600-1½)	1940-1¾ 560 (600-1¾)	1940-2 560 (600-2)
CIRCLING	1940-1	556 (600-1)	1940-1½ 556 (600-1½)	2000-2 616 (700-2)	2020-2¼ 636 (700-2¼)
ORIYE FIX MINIMUMS					
S-LOC 30C	1800-1	420 (500-1)	1800-1¼ 420 (500-1¼)	1800-1½ 420 (500-1½)	
CIRCLING	1880-1	496 (500-1)	1880-1½ 496 (500-1½)	2000-2 616 (700-2)	2020-2¼ 636 (700-2¼)

