

PHOENIX DEP CON  
124.9 353.8  
ATIS  
133.5 270.275  
CLINC DEL  
135.05  
GND CON  
128.25 275.8  
GATEWAY TOWER ★  
120.6 289.4

NOTE: RNAV 1.

**NOTE:** Turbojets and turboprops only.

NOTE: RADAR required.

NOTE: GPS required.

NOTE: ABQ transition ATC assigned only.

NOTE: Aircraft filing over ACH, LBL, ONM, CNX, PNH, MMB, TCC, IRW and TXO file FTHLS DEPARTURE.

NOTE: Aircraft filing over ABQ, CIM, FTI, and GCK file LALUZ DEPARTURE.

NOTE: Aircraft filing over DEN, RSK, ALS, and points north of ALS file  
YOTES DEPARTURE.

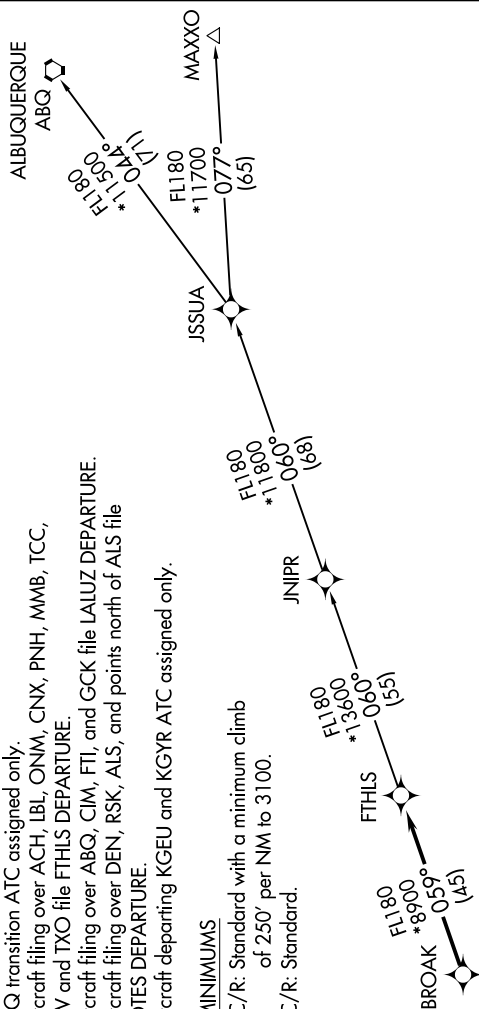
NOTE: Aircraft departing KGEU and KGYR ATC assigned only.

## TAKEOFF MINIMUMS

Rwys 12L/C/R: Standard with a minimum climb of 250' per NM to 3100

Rwys 301/C/R: Standard

**TOP ALTITUDE:  
ASSIGNED BY ATC**



## DEPARTURE ROUTE DESCRIPTION

TAKEOFF RUNWAYS 12L/C/R: Climb heading 124° or as assigned by ATC. Thence. . . .  
TAKEOFF RUNWAYS 30L/C/R: Climb heading 304° or as assigned by ATC. Thence. . . .

... expect RADAR vectors to BROAK, then on track 059° to FTHLS, then on (transition).  
Maintain ATC assigned altitude, expect filed altitude 3 minutes after departure.

ALBUQUERQUE TRANSITION (FTHLS6.ABQ)

## JNIPR TRANSITION (FTHLS6.JNIPR)

MAXXO TRANSITION (FTHLS6.MAXXO)

NOTE: Chart not to scale.