

WAAS CH <b>73006</b> <b>W03A</b>	APP CRS <b>032°</b>	Rwy Idg <b>10165</b> TDZE <b>5328</b> Apt Elev <b>5344</b>
--	------------------------	--

RNAV (GPS) RWY 3

CASPER/NATRONA COUNTY INTL (CPR)

▼

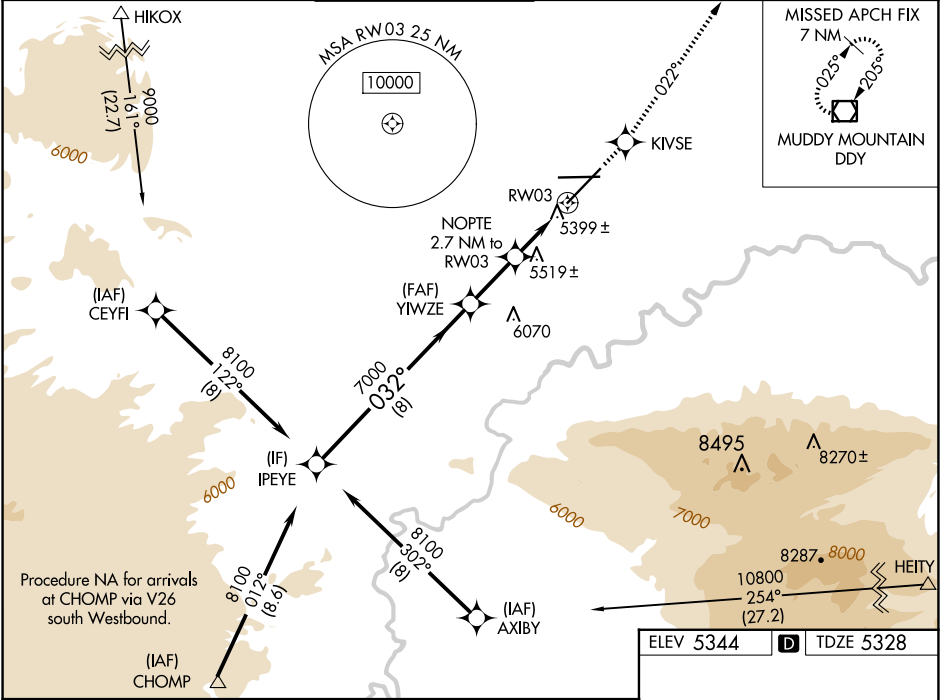
▲

For inoperative MALSR, increase LPV all Cats visibility to 1 mile.  
For uncompensated Baro-VNAV systems, LNAV/VNAV NA below -25°C (-13°F) or above 38°C (100°F).  
DME/DME RNP-0.3 NA.

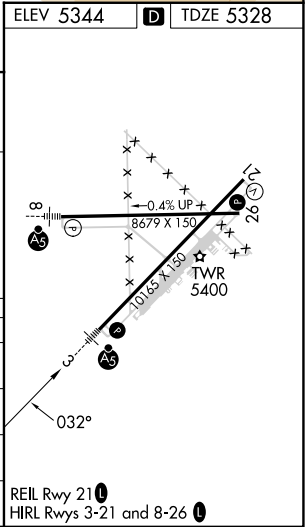
MALSR

MISSED APPROACH: Climb to 7500 direct KIVSE and via track 022° to DDY VOR/DME and hold.

ATIS <b>126.15</b>	CASPER APP CON ★ <b>120.65 354.1</b>	CASPER TOWER ★ <b>118.3 (CTAF) 0 257.8</b>	GND CON <b>121.9</b>	CLNC DEL <b>121.9 257.8</b>	UNICOM <b>122.95</b>
-----------------------	---	---	-------------------------	--------------------------------	-------------------------



Procedure Turn NA	<div>7500</div> <div>KIVSE</div> <div>tr 022°</div> <div>DDY</div>			
	*LNAV only			
	<div>8100</div> <div>032°</div> <div>7000</div> <div>*6240</div> <div>NOPT 2.7 NM to RW03</div> <div>*1.3 NM to RW03</div> <div>RW03</div>			
	<div>8 NM</div> <div>2.3 NM</div> <div>1.4 NM</div> <div>1.3 NM</div>			
CATEGORY	A	B	C	D
LPV DA	5643/24		315 (300-½)	
LNAV/VNAV DA	5691/40		363 (400-¾)	
LNAV MDA	5780/24	452 (500-½)	5780/40 452 (500-¾)	5780/50 452 (500-1)
CIRCLING	5780-1 436 (500-1)	5800-1 456 (500-1)	5860-1½ 516 (600-1½)	6200-2¾ 856 (900-2¾)



NW-1, 10 JUL 2025 to 07 AUG 2025

NW-1, 10 JUL 2025 to 07 AUG 2025