

WAAS CH 78112 W26A	APP CRS 257°	Rwy Idg TDZE 5335 Apt Elev 5344
----------------------------------------	------------------------	-----------------------------------------------------

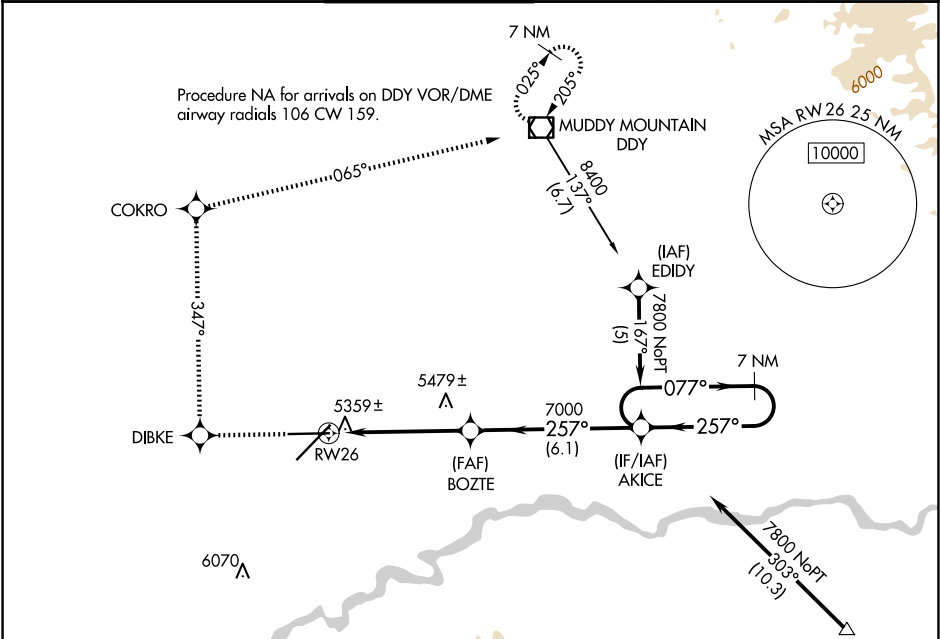
RNAV (GPS) RWY 26

CASPER/NATRONA COUNTY INTL (CPR)

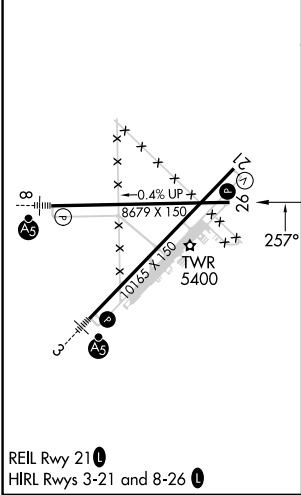
⚠ For uncompensated Baro-VNAV systems, LNAV/VNAV NA below -25°C (-13°F) or above 38°C (100°F).
DME/DME RNP-0.3 NA.

MISSED APPROACH: Climb to 8400 direct DIBKE and right turn via track 347° to COKRO and via track 065° to DDY VOR/DME and hold.

ATIS 126.15	CASPER APP CON * 120.65 354.1	CASPER TOWER * 118.3 (CTAF) 0 257.8	GND CON 121.9	CLNC DEL 121.9 257.8	UNICOM 122.95
-----------------------	-----------------------------------------	-----------------------------------------------	-------------------------	--------------------------------	-------------------------



ELEV 5344	D	TDZE 5335
-----------	---	-----------



8400	DIBKE	COKRO	tr 065°	DDY	VGSi and RNAV glidepath not coincident (VGSi Angle 3.00/TCH 50).
8443	8270	7000	7800	7800	
*LNAV only					
*1.2 NM to RWY 26					
1.2 NM 3.9 NM 6.1 NM					
CATEGORY	A	B	C	D	
LPV DA	5585-1 250 (300-1)				
LNAV/VNAV DA	5629-1 294 (300-1)				
LNAV MDA	5740-1 405 (400-1)		5740-1¼ 405 (400-1¼)		
CIRCLING	5780-1 436 (500-1)	5800-1 456 (500-1)	5860-1½ 516 (600-1½)	6200-2¾ 856 (900-2¾)	