

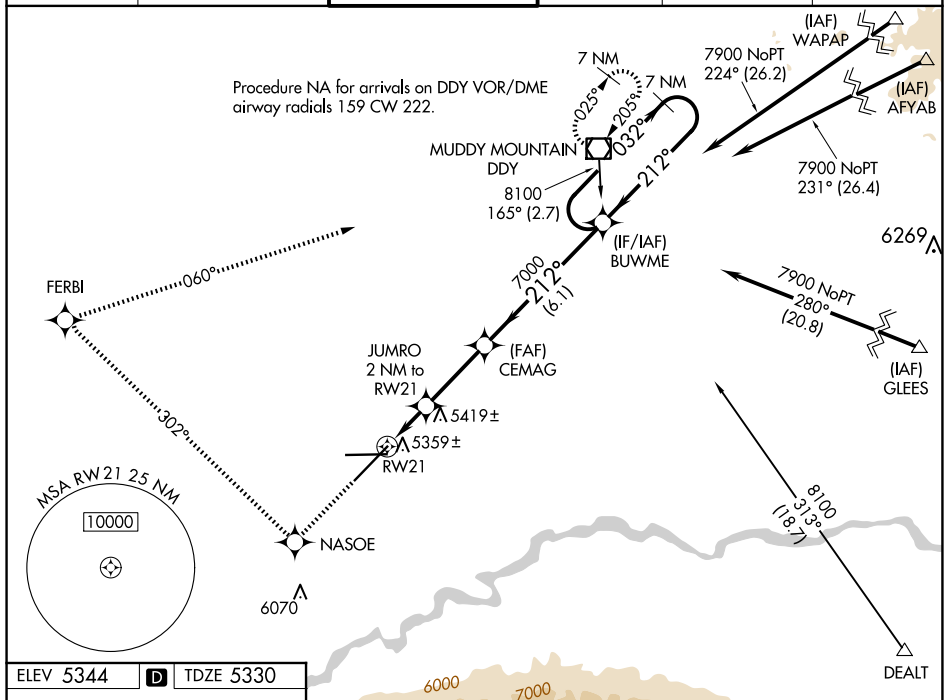
WAAS CH <b>63012</b> <b>W21A</b>	APP CRS <b>212°</b>	Rwy Idg <b>10165</b> TDZE <b>5330</b> Apt Elev <b>5344</b>
--	------------------------	--

RNAV (GPS) RWY 21  
CASPER/NATRONA COUNTY INTL (CPR)

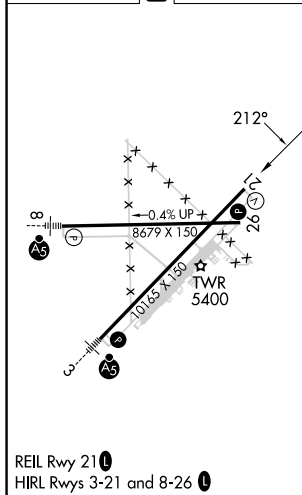
**T** For uncompensated Baro-VNAV systems, LNAV/VNAV  
**A** NA below -25°C (-13°F) or above 38°C (100°F).  
DME/DME RNP-0.3 NA.

**MISSED APPROACH:** Climb to 8100 direct NASOE and right turn via track 302° to FERBI and via track 060° to DDY VOR/DME and hold.

ATIS <b>126.15</b>	CASPER APP CON ★ <b>120.65 354.1</b>	CASPER TOWER ★ <b>118.3 (CTAF) 0 257.8</b>	GND CON <b>121.9</b>	CLNC DEL <b>121.9 257.8</b>	UNICOM <b>122.95</b>
-----------------------	---	---	-------------------------	--------------------------------	-------------------------



ELEV 5344	<b>D</b>	TDZE 5330
-----------	----------	-----------



8100 ↑	NASOE ✦	tr 302° ↗	FERBI ✦	tr 060° ↗	DDY ◻	BUWME 7 NM Holding Pattern
<p>*LNAV only</p> <p>JUMRO 2 NM to RW21</p> <p>CEMAG</p> <p>*0.9 NM to RW21</p> <p>RW21</p> <p>032° → 7900</p> <p>← 212°</p> <p>212°</p> <p>7000</p> <p>GP 3.00° TCH 56</p> <p>6020*</p> <p>0.9 1.1 NM 3 NM 6.1 NM</p>						
CATEGORY	A		B		C	D
LPV DA			5580-3/4		250 (300-3/4)	
LNAV/ VNAV	DA			5629-1		299 (300-1)
LNAV MDA	5680-1 350 (400-1)					5680-1 1/4 350 (400-1 1/4)
CIRCLING	5780-1 436 (500-1)	5800-1 456 (500-1)	5860-1 1/2 516 (600-1 1/2)	6200-2 3/4 856 (900-2 3/4)		

## RNAV (GPS) RWY 21