

LOC I-SYD 111.3	APP CRS 032°	Rwy ldg TDZE Apt Elev	10165 5328 5344
---------------------------	------------------------	-----------------------------	--

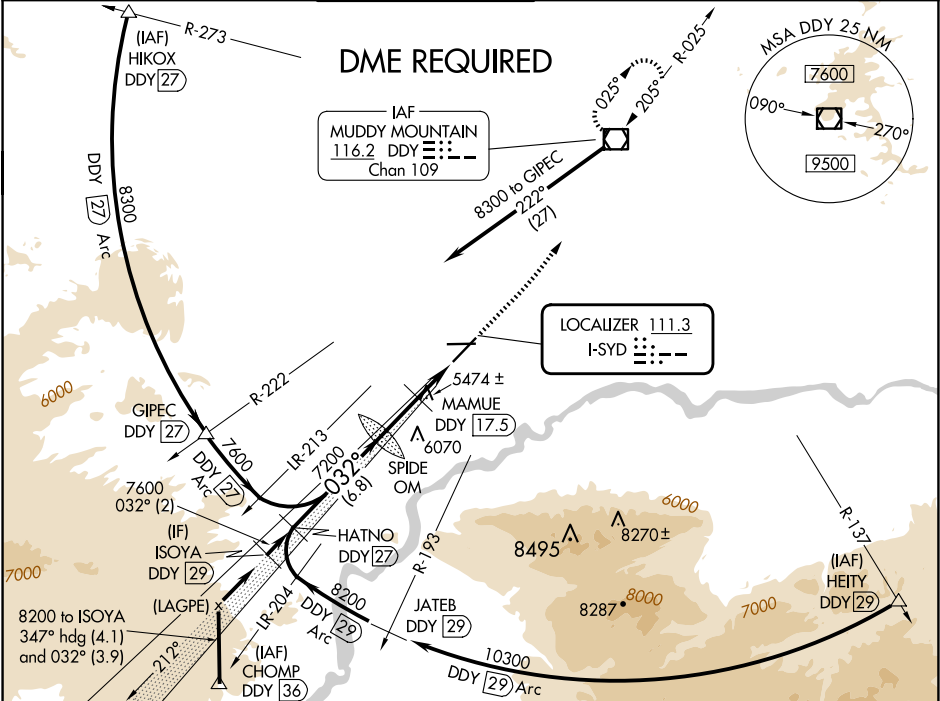
ILS or LOC RWY 3
CASPER/NATRONA COUNTY INTL (CPR)

DME from DDY VOR/DME. Simultaneous reception of I-SYD and DDY DME required. When local altimeter setting not received, use Douglas altimeter setting and increase DA to 5697 feet and all MDAs 180 feet, increase S-ILS visibility all Cats ¼ SM and S-LOC visibility Cat B, C, D and Circling Cats B, C, D visibility ½ SM, increase MAMUE FIX MINIMUM Circling visibility Cat C ½ SM and Cat D ¼ SM. For inoperative MALSR when using Douglas altimeter setting increase S-ILS visibility all Cats to 1¼ mile. MAMUE FIX MINIMUMS: For inoperative MALSR, increase S-LOC visibility Cats C, and D to 1½ mile. #RVR 1800 authorized with use of FD or AP or HUD to DA.

MALSR

MISSED APPROACH:
Climb to 7500
then left turn direct
DDY VOR/DME
and hold.

ATIS 126.15	CASPER APP CON ★ 120.65 354.1	CASPER TOWER ★ 118.3 (CTAF) 0 257.8	GND CON 121.9	CLNC DEL 121.9 257.8	UNICOM 122.95
-----------------------	---	---	-------------------------	--------------------------------	-------------------------



ISOYA DDY 29	*6400 when using Douglas altimeter setting.	7500	DDY	ELEV 5344	TDZE 5328
8200	032°	7600	7200	*6220	DDY 14.7
GS 3.00°	TCH 50	2 NM	6.8 NM	2.9 NM	2.7 NM
CATEGORY	A	B	C	D	
S-ILS 3	#5528/24 200 (200-½)				
S-LOC 3	6220/40	892 (900-¾)	6220-2	892 (900-2)	
CIRCLING	6220-1¼	876 (900-1¼)	6220-2½	876 (900-2½)	6220-2¾
MAMUE FIX MINIMUMS					
S-LOC 3	5740/24	412 (400-½)	5740/40	412 (400-¾)	
CIRCLING	5740-1	5800-1	5860-1½	6200-2¾	
	396 (400-1)	456 (500-1)	516 (600-1½)	856 (900-2¾)	

NW-1, 10 JUL 2025 to 07 AUG 2025

NW-1, 10 JUL 2025 to 07 AUG 2025