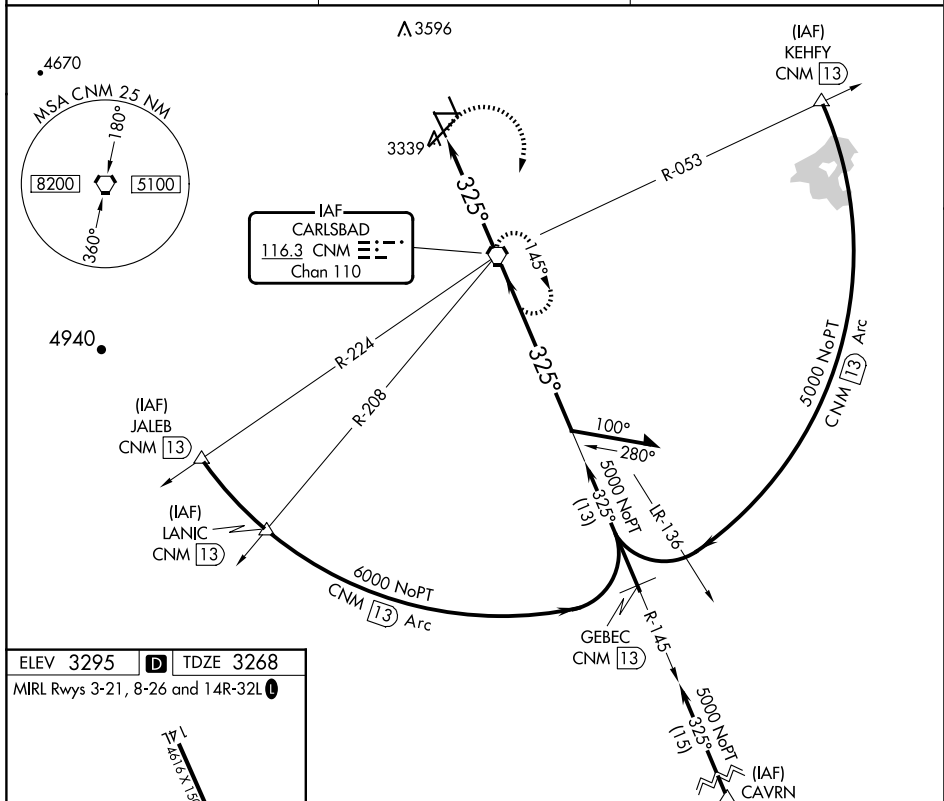


VOR RWY 32L  
CAVERN CITY AIR TRML (CNM)

- |  |  |   |
|--|--|---|
| <div style="display: flex; flex-direction: column; align-items: center;"> <div style="background-color: black; color: white; padding: 2px 5px; margin-bottom: 2px;">▼</div> <div style="background-color: black; color: white; padding: 2px 5px;">▲</div> </div> | <p>When local altimeter setting not received, use Artesia Muni altimeter setting and increase all MDA 120 feet and S-32L Cats C/D visibility to 1½, Circling Cat C visibility to 2¼.</p> | <p>MISSED APPROACH: Climbing right turn to 5000 direct CNM VORTAC and hold.</p> |
|--|--|---|

|                        |   |                                 |
|------------------------|---|---------------------------------|
| ASOS<br><b>118.375</b> | ALBUQUERQUE CENTER<br><b>135.875 292.15</b> | UNICOM<br><b>123.0 (CTAF) 0</b> |
|------------------------|---|---------------------------------|



|  |          |           |
|--|----------|-----------|
| ELEV 3295                                | <b>D</b> | TDZE 3268 |
| MIRL Rwy 3-21, 8-26 and 14R-32L <b>L</b> |          |           |

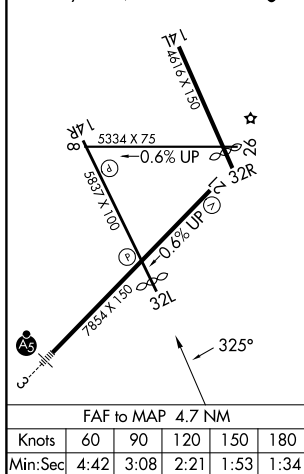


Diagram illustrating the VORTAC approach path. The path starts at a 5000 ft altitude, descends at 145° to a 5000 ft altitude, then descends at 325° to a 5000 ft altitude. The path is labeled "CNM VORTAC" and "Remain within 10 NM". The path is also labeled "CNM 3.7" and "CNM 4.7". The path is also labeled "5000" and "5000". The path is also labeled "145°" and "325°". The path is also labeled "VGSi and descent angles not coincident (VGSi Angle 3.00/TCH 59)".

SW-1, 10 JUL 2025 to 07 AUG 2025

SW-1, 10 JUL 2025 to 07 AUG 2025