

LOC I-CVD 111.9	APP CRS 034°	Rwy Ldg TDZE Apt Elev	7504 3295 3295
---------------------------	------------------------	-----------------------------	---

ILS RWY 3

CAVERN CITY AIR TRML (CNM)

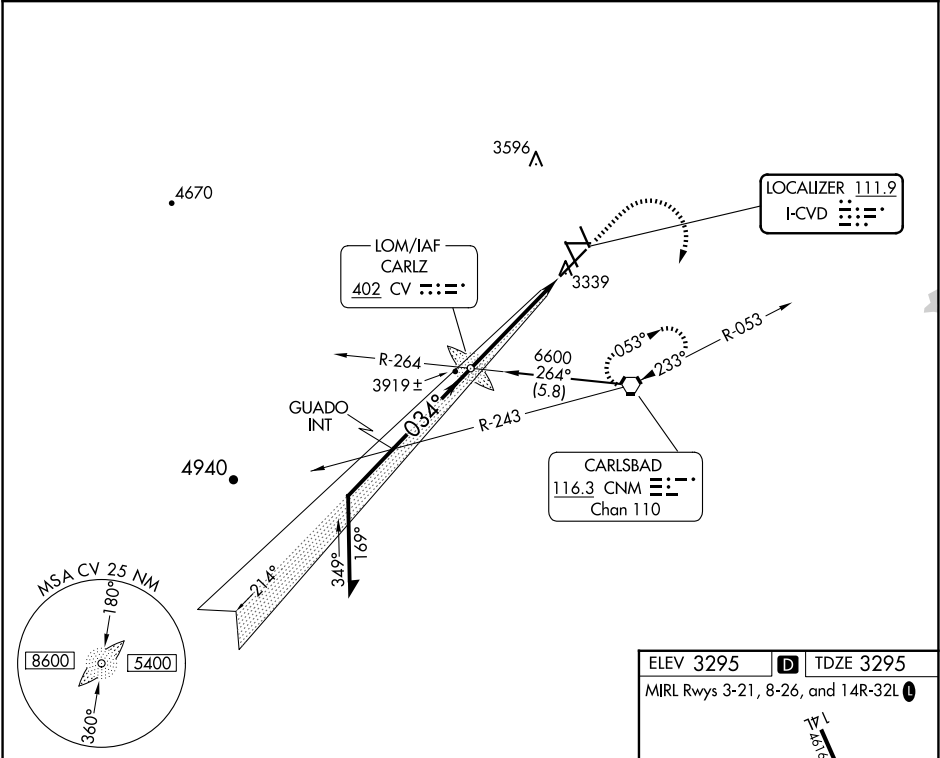
▼

▲

MALSR

MISSED APPROACH: Climb to 4000 then climbing right turn to 6600 direct CNM VORTAC and hold.

ASOS 118.375	ALBUQUERQUE CENTER 135.875 292.15	UNICOM 123.0 (CTAF) 0
------------------------	---	---------------------------------



Remain within 10 NM

6600

034°

6100

6100

*5000

4854

GUADO INT

214°

CARLZ LOM/INT

4000

6600

CNM

*LOC only

GS 3.00° TCH 51

4 NM

4.7 NM

CATEGORY	A	B	C	D
S-ILS 3	3495-½ 200 (200-½)			
S-LOC 3	3940-½ 645 (700-½)	3940-1¼ 645 (700-1¼)	3940-1½ 645 (700-1½)	
CIRCLING	3940-1 645 (700-1)	3960-1⅓ 665 (700-1⅓)	4260-3 965 (1000-3)	

ELEV 3295 D TDZE 3295

MIRL Rwys 3-21, 8-26, and 14R-32L

FAF to MAP 4.7 NM

Knots	60	90	120	150	180
Min:Sec	4:42	3:08	2:21	1:53	1:34

SW-1, 10 JUL 2025 to 07 AUG 2025

SW-1, 10 JUL 2025 to 07 AUG 2025