

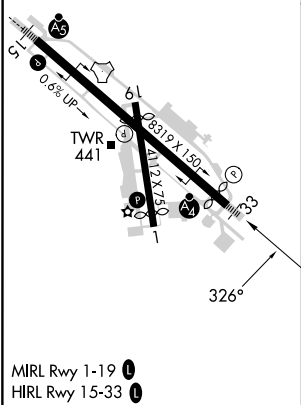
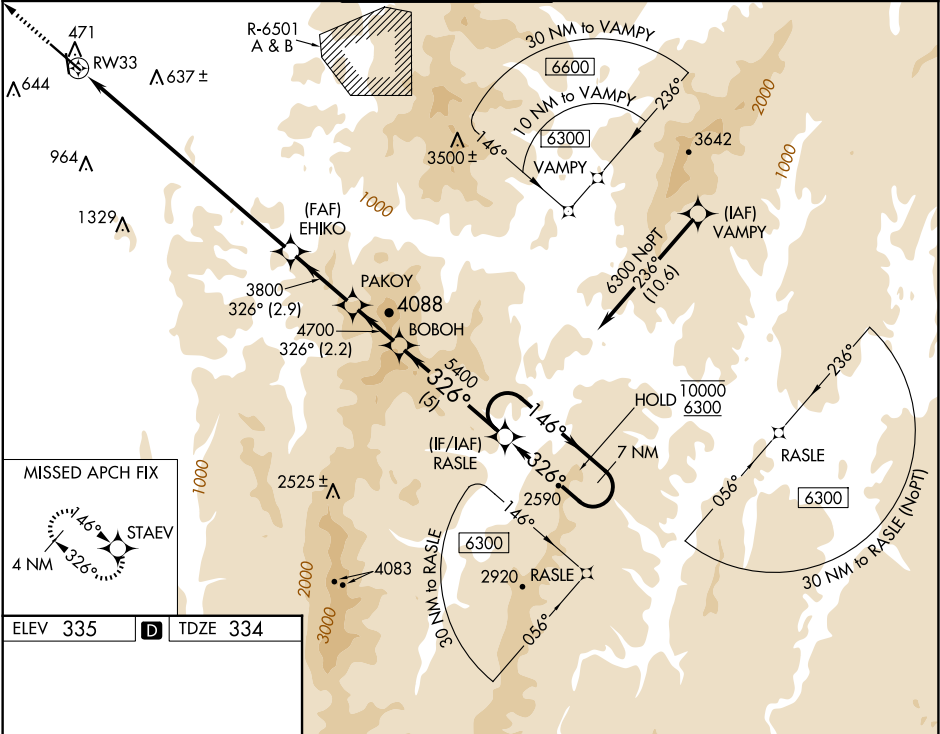
WAAS CH 65812 W33A	APP CRS 326°	Rwy Idg TDZE 334 Apt Elev 335	7819
--	------------------------	---	-------------

RNAV (GPS) Z RWY 33

PATRICK LEAHY BURLINGTON INTL (BT'V)

RNP APCH - GPS.		MALS F	MISSED APPROACH: Climb to 3000 direct STA EV and hold.
Rwy 33 helicopter visibility reduction below RVR 4000 NA. Inop table does not apply. For uncompensated Baro-VNAV systems, LNAV/VNAV NA below -25°C or above 37°C.			

ATIS 123.8 269.9	BURLINGTON APP CON ★ 121.1 278.8	BURLINGTON TOWER ★ 118.3 (CTAF) 0 257.8	GND CON 126.3 348.6	CLNC DEL 119.15	UNICOM 122.95
----------------------------	--	---	-------------------------------	---------------------------	-------------------------



3000 ↑ STA EV		7 NM Holding Pattern				
RW33		RASLE				
4.7 NM to RW33		146° → 10000 ← 326° 6300				
5.4 NM		GP 3.20° TCH 55				
2.9 NM						
2.2 NM						
5 NM						
CATEGORY	A	B	C	D	E	
LPV DA	584/40 250 (300-¾)					
LNAV/VNAV DA	1782-5 1448 (1500-5)					
LNAV MDA	2000-1¼ 1666 (1700-1¼)		2000-3 1666 (1700-3)			

NE-1, 10 JUL 2025 to 07 AUG 2025

NE-1, 10 JUL 2025 to 07 AUG 2025