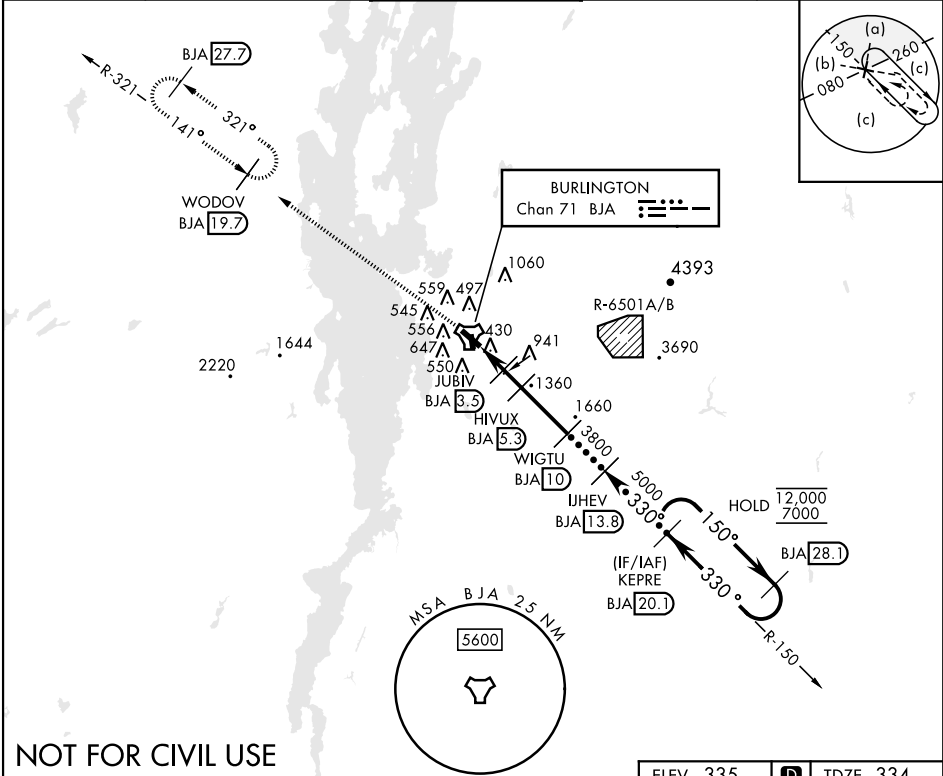


HI-TACAN RWY 33

TACAN BJA Chan 71	APCH CRS 330°	Rwy ldg TDZE Arpt Elev	7819 334 335	AL-70 [USAF]	PATRICK LEAHY BURLINGTON INTL (KBTV)
<div><div><div></div><div></div></div><div><div></div><div></div></div></div>				MALSF A4	MISSED APPROACH: Climb to 8000 on BJA TACAN R-321 to WODOV/BJA 19.7 DME and hold, continue climb-in-hold to 8000.
ATIS 123.8 269.9	APP CON 121.1 278.8	TOWER ★ 118.3 (CTAF) 0257.8	GND CON 126.3 348.6	CLNC DEL 119.15	



NOT FOR CIVIL USE

EMERG SAFE ALT 100 NM 8500

8000 BJA R-321	WODOV BJA 19.7	VGSI and descent angles not coincident (VGSI Angle 3.20/TCH 53).			KEPRE 20.1	28.1
TACAN	JUBIV 3.5	HUVUX 5.3	WIGTU 10	IUHEV 13.8	150°	12,000 7000
ZOKOD 0.9	1360	2040	3800	5000	330°	330°
2.6 NM	1.8 NM	4.8 NM			3.50° TCH 53	
CATEGORY	C	D	E			
S-33	1200-2½	866	(900-2½)			
CIRCLING	1220-2¾ 885 (900-2¾)	1380-3 1045 (1100-3)	1500-3 1165 (1200-3)			
MIRL Rwy 1-19 0 HIRL Rwy 15-33 0						

HI-TACAN RWY 33

NE-1, 10 JUL 2025 to 07 AUG 2025

NE-1, 10 JUL 2025 to 07 AUG 2025