

VOR/DME BRL	APP CRS	Rwy Idg	4850
111.4	288°	TDZE	697
Chan 51		Apt Elev	698

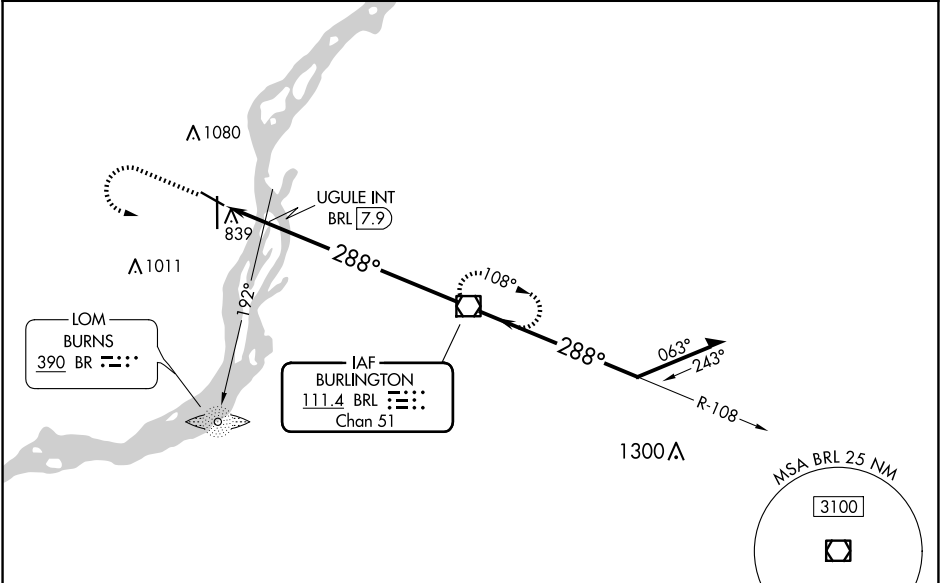
VOR RWY 30  
SOUTHEAST IOWA RGNL (BRL)

**V**  
**A**

Rwy 30 helicopter visibility reduction below 3/4 SM NA.

MISSED APPROACH: Climb to 2000 then climbing left turn to 3000 direct BRL VOR/DME and hold.

ASOS 118.025	CHICAGO CENTER 135.6 370.95	UNICOM 123.0 (CTAF) <b>0</b>
-----------------	--------------------------------	---------------------------------



ELEV 698 **D** TDZE 697

MIRL Rwy 12-30 **0**  
HIRL Rwy 18-36 **0**  
REIL Rwys 12, 18 and 30 **0**

FAF to MAP 9.6 NM

Knots	60	90	120	150	180
Min:Sec	9:36	6:24	4:48	3:50	3:12

2000 3000 BRL		VGSI and descent angles not coincident (VGSI Angle 3.00/TCH 30). Remain within 10 NM			
UGULE INT BRL 7.9		BRL 8.5 2.98° TCH 45			
BRL 9.6		288° 1280 3000 288°			
1.2 0.5 NM 7.9 NM					
CATEGORY	A	B	C	D	
S-30	1280-1	583 (600-1)	1280-1 3/4 583 (600-1 3/4)	NA	
<b>C</b> CIRCLING	1280-1	582 (600-1)	1380-2 682 (700-2)	NA	
UGULE FIX MINIMUMS					
S-30	1100-1	403 (500-1)	1100-1 1/8 403 (500-1 1/8)	NA	
<b>C</b> CIRCLING	1180-1	482 (500-1)	1380-2 682 (700-2)	NA	

NC-3, 10 JUL 2025 to 07 AUG 2025

NC-3, 10 JUL 2025 to 07 AUG 2025