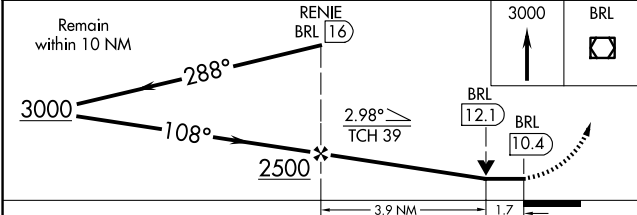
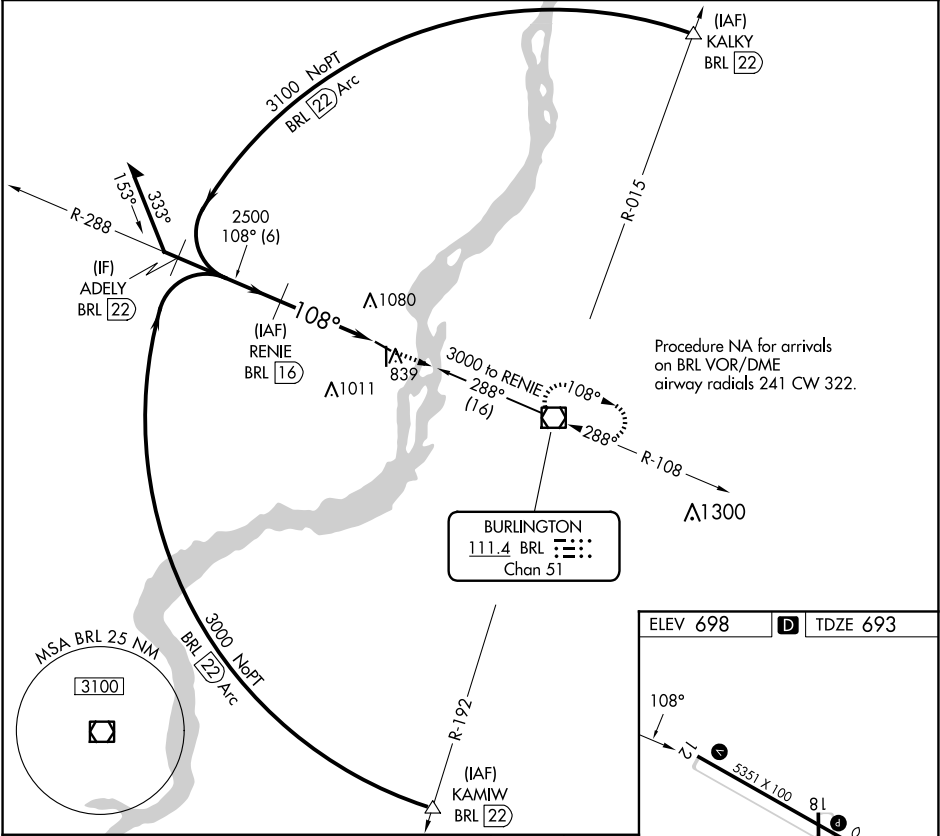


VOR/DME BRL	APP CRS	Rwy Idg	5350
111.4	108°	TDZE	693
Chan 51		Apt Elev	698

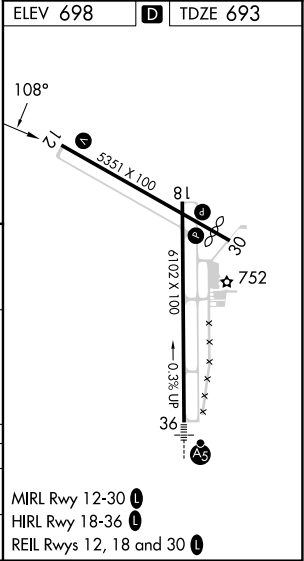
VOR RWY 12  
SOUTHEAST IOWA RGNL(BRL)

DME required.	MISSED APPROACH: Climb to 3000 direct BRL VOR/DME and hold.
---------------	--

ASOS 118.025	CHICAGO CENTER 135.6 370.95	UNICOM 123.0 (CTAF) 0
-----------------	--------------------------------	--------------------------



CATEGORY	A	B	C	D
S-12	1280-1	587 (600-1)	1280-1¾ 587 (600-1¾)	NA
CIRCLING	1280-1	582 (600-1)	1380-2 682 (700-2)	NA



NC-3, 10 JUL 2025 to 07 AUG 2025

NC-3, 10 JUL 2025 to 07 AUG 2025