

LOC I-BRL	APP CRS	Rwy Idg	6102
108.9	359°	TDZE	694
		Apt Elev	698

ILS or LOC RWY 36

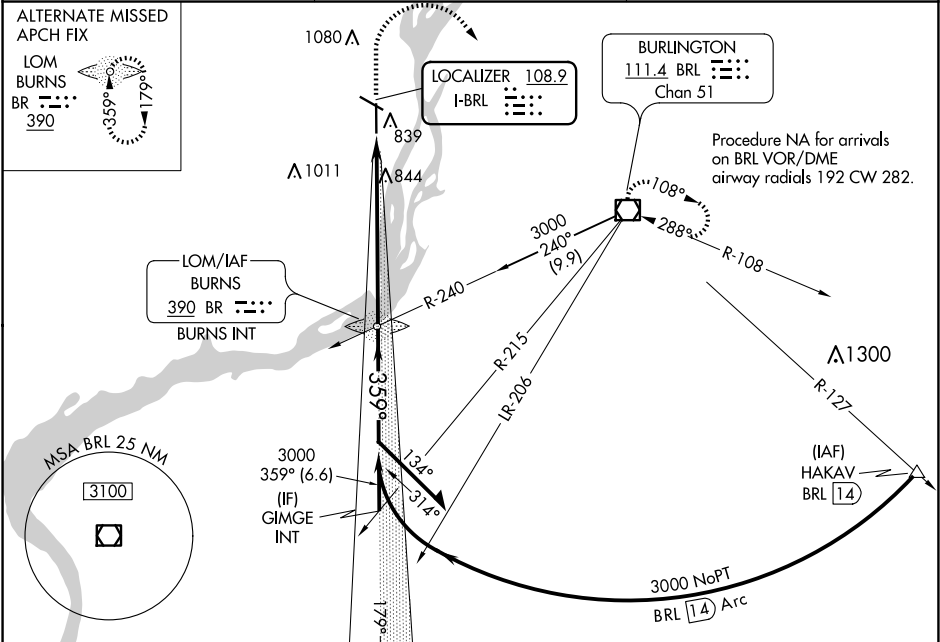
SOUTHEAST IOWA RGNL (BRL)

NA

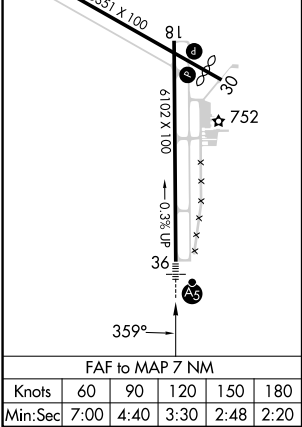
MALSR

MISSED APPROACH: Climb to 2800 then climbing right turn to 3000 direct BRL VOR/DME and hold.

ASOS 118.025	CHICAGO CENTER 135.6 370.95	UNICOM 123.0 (CTAF) 0
------------------------	---------------------------------------	---------------------------------



ELEV 698	D	TDZE 694
REIL Rwy 12, 18 and 30		
MIRL Rwy 12-30		
HIRL Rwy 18-36		



2800

3000

BRL

BR BURNS LOM/INT

2992

179°

359°

3000

3000

7 NM

Remain within 10 NM

GS 3.00°

TCH 54

CATEGORY	A	B	C	D
S-ILS 36	894-½ 200 (200-½)			
S-LOC 36	1140-½ 446 (500-½)	1140-7/8 446 (500-7/8)	1140-1 446 (500-1)	
CIRCLING	1180-1 482 (500-1)	1380-2 682 (700-2)	1380-2¼ 682 (700-2¼)	