

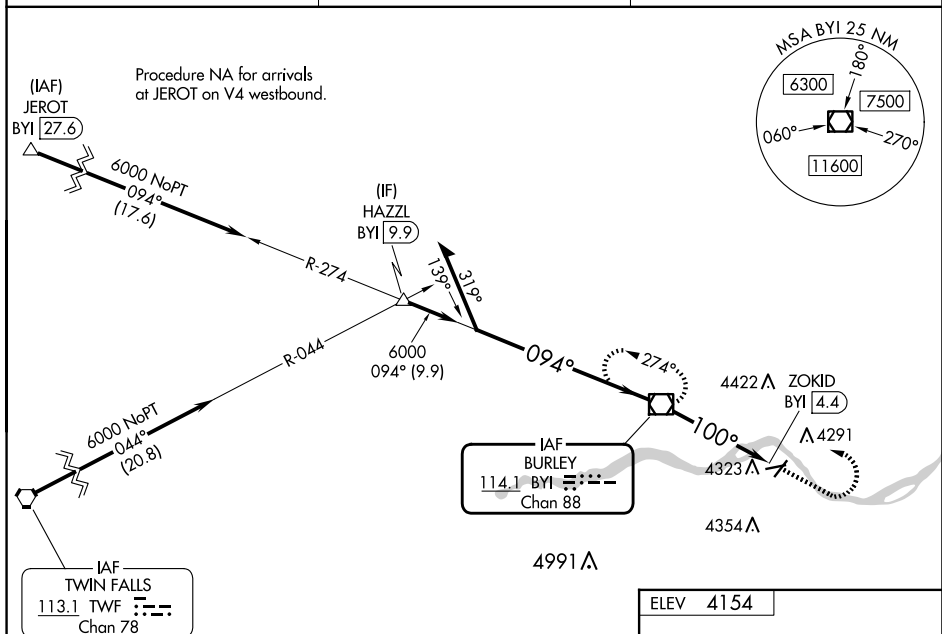
VOR/DME BYI 114.1 Chan 88	APP CRS 100°	Rwy Idg N/A TDZE N/A Apt Elev 4154
---	------------------------	---

VOR-A
BURLEY MUNI (BYI)

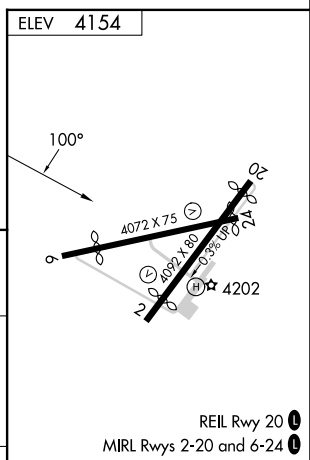
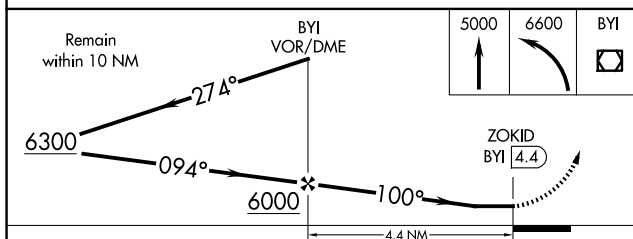
▼ Circling Rwy 2, 24 NA at night. Rwy 2, 20, 24 helicopter visibility reduction below 1 SM NA. When local altimeter setting not received, use TWF altimeter setting and increase all MDAs 80 feet and visibility Cats C and D ½ SM. When Circling Rwy 20, exhaust stacks located along Rwy 20 extended final approach course approximately 2345 feet from approach end.

MISSED APPROACH: Climb to 5000 then climbing left turn to 6600 direct BYI VOR/DME and hold, continue climb-in-hold to 6600.

ASOS 135.575	TWIN FALLS APP CON ★ 126.7 353.75	CTAF 122.90
-----------------	--------------------------------------	----------------



Procedure NA for arrival on TWF
VORTAC airway radials 349 CW 097.



CATEGORY	A	B	C	D	FAF to MAP 4.4 NM					
					Knots	60	90	120	150	180
CIRCLING	4640-1	4660-1	4740-1½	4780-2						
	486 (500-1)	506 (600-1)	586 (600-1½)	626 (700-2)	Min:Sec	4:24	2:56	2:12	1:46	1:28