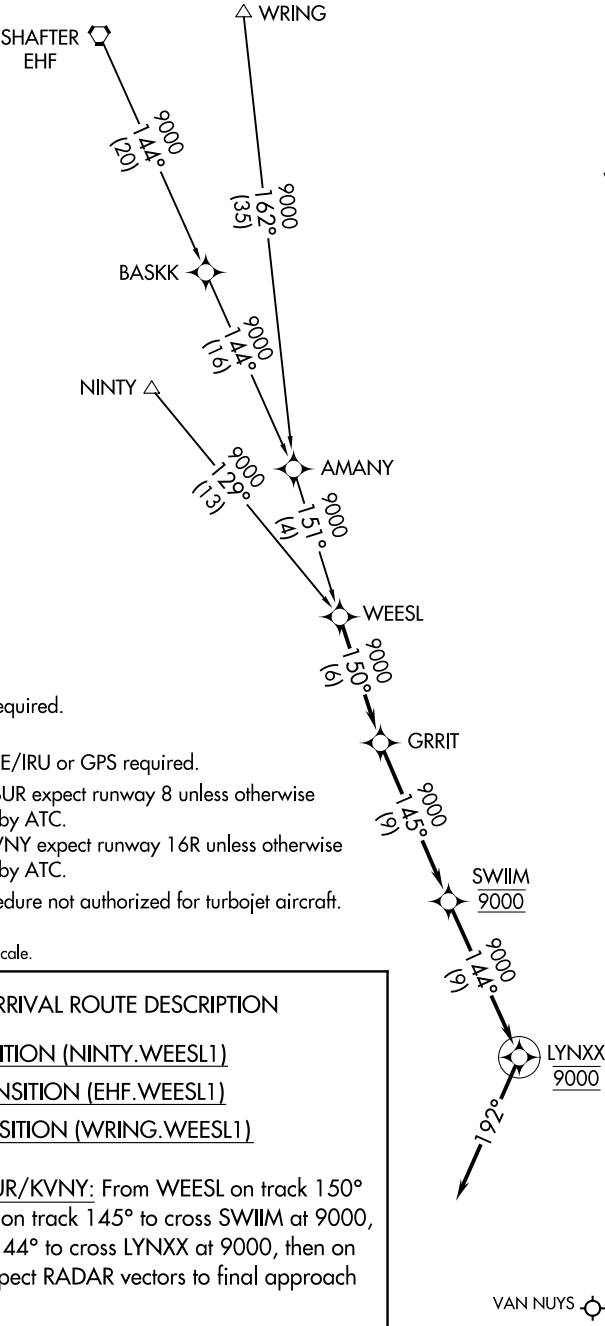


SOCAL APP CON
120.4 360.6
BUR D-ATIS
134.5
VNY ATIS
127.55
BURBANK TOWER
118.7 254.3
VAN NUYS TOWER★
119.3 239.0



- NOTE: RADAR required.
NOTE: RNAV 1.
NOTE: DME/DME/IRU or GPS required.
NOTE: Landing BUR expect runway 8 unless otherwise assigned by ATC.
NOTE: Landing VNY expect runway 16R unless otherwise assigned by ATC.
NOTE: This procedure not authorized for turbojet aircraft.

NOTE: Chart not to scale.

ARRIVAL ROUTE DESCRIPTION

NINTY TRANSITION (NINTY.WEESL1)

SHAFTER TRANSITION (EHF.WEESL1)

WRING TRANSITION (WRING.WEESL1)

LANDING KBUR/KVNY: From WEESL on track 150° to GRRIT, then on track 145° to cross SWIIM at 9000, then on track 144° to cross LYNXX at 9000, then on track 192°. Expect RADAR vectors to final approach course.