

APP CRS	Rwy Idg	<b>5801</b>
<b>079°</b>	TDZE	<b>727</b>
	Apt Elev	<b>778</b>

RNAV (RNP) Y RWY 8  
BOB HOPE (BUR)

	RNP AR APCH.
--	--------------

**⚠** For uncompensated Baro-VNAV systems, procedure NA below 1°C or above 54°C. Straight-in Rwy 8 at night, operational VGSi required, remain on or above VGSi glidepath until threshold. Inop table does not apply to RNP 0.20\* and RNP 0.30. For inop ALS, increase RNP 0.30# all Cats visibility to 1¼ SM.

MALSR



**MISSED APPROACH:** Climb to 1 200 then climbing right turn to 4600 direct COTSI and on track 263° to YOLYY and hold.

\*Missed approach requires minimum climb of 340 feet per NM to 2400.

# Missed approach requires minimum climb of 317 feet per NM to 2400.

D-ATIS  
**134.5**

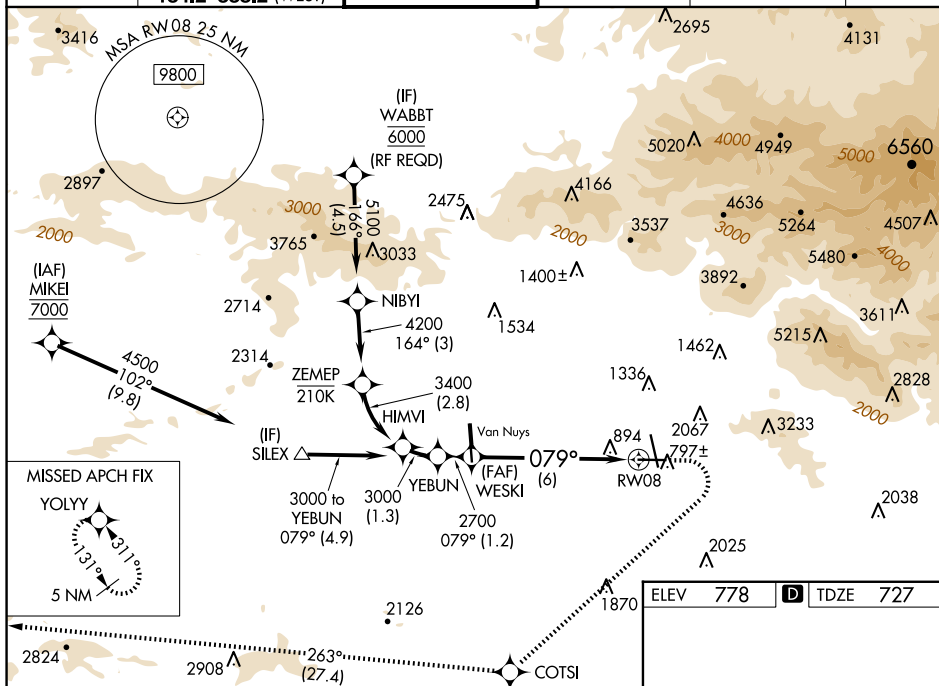
SOCAL APP CON  
120.4 360.6 (NORTH)  
134.2 338.2 (WEST)

BURBANK TOWER  
118.7 254.3

GND CON  
123.9 348.4

CLNC DEL  
118.0 348.6

CPDLC



SW-3, 10 JUL 2025 to 07 AUG 2025

SW-3, 10 JUL 2025 to 07 AUG 2025

YEBUN 3000 079° 2700 WESKI

GP 3.00°  
TCH 60

1200 ↑	4600 ↗	COTS1 ✦	tr 263° ✦	YOLYY ✦
-----------	-----------	------------	--------------	------------

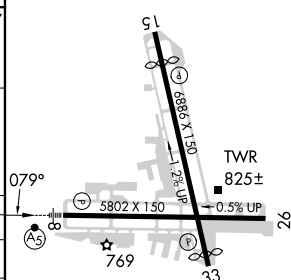
See planview for multiple IF locations.

RW08

CATEGORY	A	B	C	D
RNP 0.20 DA*	1068/50 341 (300-1)			
RNP 0.30 DA#	1151/50 424 (400-1)			
RNP 0.30 DA	1485-2½ 758 (800-2½)			

**AUTHORIZATION REQUIRED**

ELEV	778	<b>D</b>	TDZE	727
------	-----	----------	------	-----



MIRL Rwy 15-33  
HIRL Rwy 8-26  
REIL Rwy 15, 26 and 33