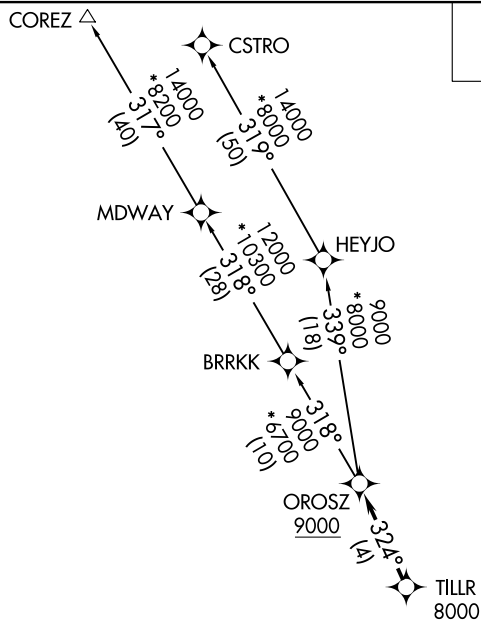


## OROSZ TWO DEPARTURE (RNAV)

BOB HOPE (BUR)  
BURBANK, CALIFORNIA

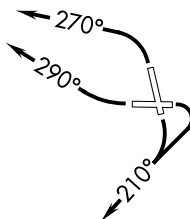


CLNC DEL  
118.0 348.6  
CPDLC  
SOCAL DEP CON  
124.6 298.85

NOTE: DME/DME/IRU or GPS required.  
NOTE: RNAV 1.  
NOTE: RADAR required.  
NOTE: Maintain at or below 250K unless  
otherwise directed by ATC.

Rwy 8: Standard with minimum climb of 420' per NM to 2500.  
Rwy 15: Standard with minimum climb of 340' per NM to 2100.  
Rwy 26: Standard with minimum climb of 380' per NM to 4800.  
Rwy 33: Standard with minimum climb of 460' per NM to 4900.

NOTE: Chart not to scale.



**T**

**TAKEOFF RUNWAYS 8, 15:** Climbing right turn heading 210° or as assigned by ATC, expect vectors to cross TILLR at or above 8000, then on track 324° to cross OROSZ at or above 9000, thence. . .

**TAKEOFF RUNWAY 26:** Climbing right turn heading 290° or as assigned by ATC, expect vectors to cross TILLR at or above 8000, then on track 324° to cross OROSZ at or above 9000, thence. . .

**TAKEOFF RUNWAY 33:** Climbing left turn heading 270° or as assigned by ATC, expect vectors to cross TILLR at or above 8000, then on track 324° to cross OROSZ at or above 9000, thence. . .

...on (transition) maintain FL230. Expect filed altitude 10 minutes after departure.

COREZ TRANSITION (OROSZ2.COREZ)

CSTRO TRANSITION (OROSZ2.CSTRO)

OROSZ TWO DEPARTURE (RNAV)  
(OROSZ2.OROSZ) 01FEB18

BURBANK, CALIFORNIA  
BOB HOPE (BUR)

SW-3, 10 JUL 2025 to 07 AUG 2025