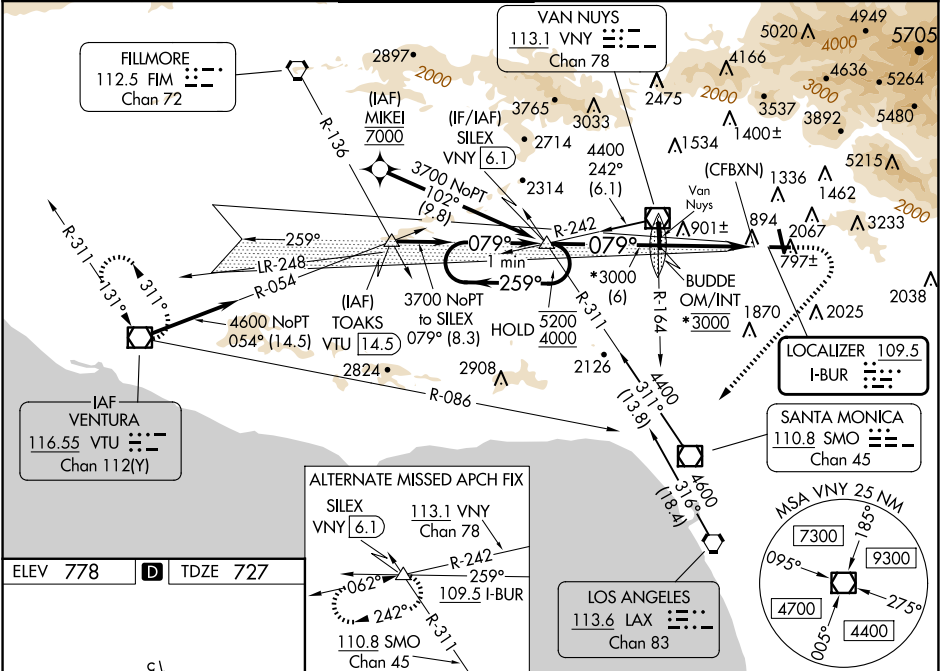


LOC I-BUR	APP CRS	Rwy Idg	5801
109.5	079°	TDZE	727
		Apt Elev	778

ILS Z or LOC Z RWY 8
BOB HOPE (BUR)

From MIKE1: RNAV 1-GPS required.	MALSR	MISSED APPROACH: Climb to 1300 then climbing right turn to 4600 on heading 210° and VTU VOR/DME R-086 to VTU VOR/DME and hold. # Missed approach requires a minimum climb of 340 feet per NM to 2520 (if unable to meet climb gradient, see ILS Y or LOC Y RWY 8).
Localizer unusable within 0.9 NM to thld. Straight-in Rwy 8 at night, Circling to Rwy 33 at night, operational VGSI required, remain on or above VGSI glidepath until threshold. Circling Rwy 26 NA at night and Circling Rwy 33 NA at night for Cat D. Circling NA for Cats A/B/C northeast of Rwy 15 and 26. Circling NA for Cat D east of Rwy 15-33. Inop table does not apply to S-ILS 8. For inop ALS, increase S-LOC 8 Cats A/B visibility to RVR 6000 and S-LOC 8 Cats C/D visibility to 1 1/4 SM. Rwy 8 helicopter visibility reduction below RVR 5000 NA.		

D-ATIS	SOCAL APP CON	BURBANK TOWER	GND CON	CLNC DEL	CPDLC
134.5	120.4 360.6 (NORTH) 134.2 338.2 (WEST)	118.7 254.3	123.9 348.6	118.0 348.6	



One Minute Holding Pattern		SILEX VNY (6.1)		1300 ↑		4600 hdg 210°		VTU R-086		VTU 	
5200 ← 259° 4000 → 079°		3700 → 079°		2753		*LOC only					
GS 3.00° TCH 60		3000		*3000		(CFBXXN)					
		6 NM		5.2 NM		0.9					
CATEGORY	A		B		C		D				
S-ILS 8 #			1075/50		348 (300-1)						
S-LOC 8 #			1160/50		433 (400-1)						
CIRCLING	1280-1 1/8 502 (600-1 1/8)		1640-1 1/4 862 (900-1 1/4)		2240-3 1462 (1500-3)		2320-3 1542 (1600-3)				