

LOC I-BUR 109.5	APP CRS 079°	Rwy Idg TDZE Apt Elev	5801 727 778
---------------------------	------------------------	-----------------------------	---

ILS Y or LOC Y RWY 8
BOB HOPE (BUR)

From MIKEI: RNAV 1-GPS required.

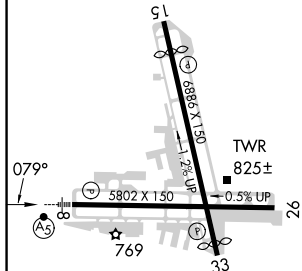
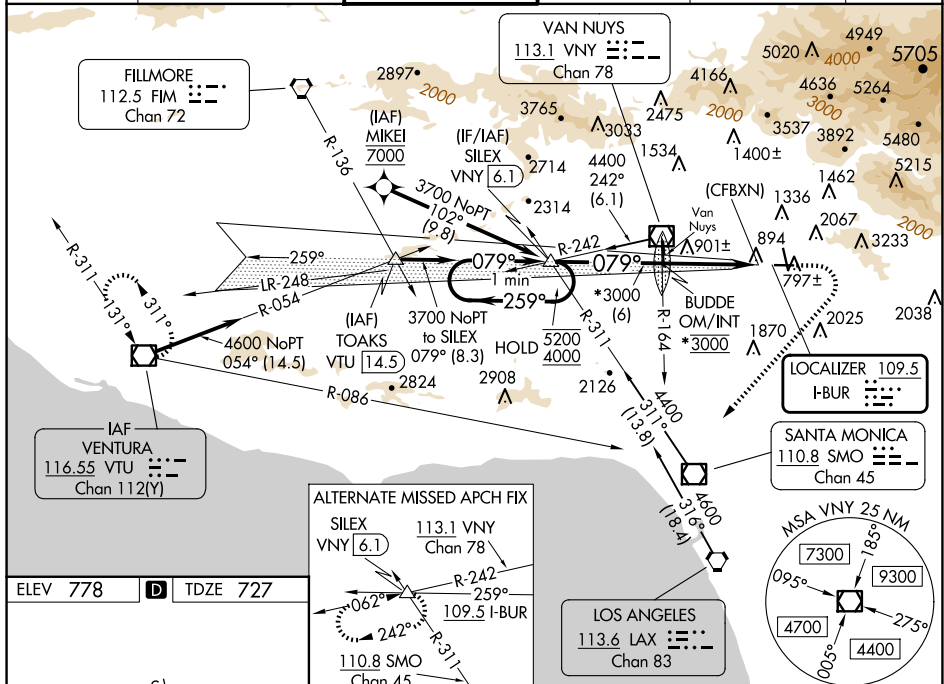
V Localizer unusable within 0.9 NM to thld. Straight-in Rwy 8 at night, Circling to Rwy 33 at night, operational VGSi required, remain on or above VGSi glidepath until threshold.

A Circling Rwy 26 NA at night and Circling Rwy 33 NA at night for Cat D. Circling NA for Cats A/B/C northeast of Rwy 15 and 26. Circling NA for Cat D east of Rwy 15-33. Inop table does not apply to S-ILS Rwy 8. For Inop ALS, increase S-LOC 8 Cats A/B visibility to 1/4 SM. Rwy 8 helicopter visibility reduction below RVR 5000 NA.

MALSR

MISSED APPROACH:
Climb to 1800 then
climbing right turn to
4600 on heading 210°
and VTU VOR/DME
R-086 to VTU VOR/DME
and hold.

D-ATIS 134.5	SOCAL APP CON 120.4 360.6 (NORTH) 134.2 338.2 (WEST)	BURBANK TOWER 118.7 254.3	GND CON 123.9 348.6	CLNC DEL 118.0 348.6	CPDLC
------------------------	--	-------------------------------------	-------------------------------	--------------------------------	-------



MIRL Rwy 15-33
HIRL Rwy 8-26
REIL Rwy 15, 26 and 33

FAF to MAP 5.2 NM

Knots	60	90	120	150	180
Min:Sec	5:12	3:28	2:36	2:05	1:44

BURBANK, CALIFORNIA

Amdt 6B 11JUL24

34°12'N-118°22'W

BOB HOPE (BUR)

ILS Y or LOC Y RWY 8

SW-3, 10 JUL 2025 to 07 AUG 2025

One Minute Holding Pattern

SILEX VNY 6.1

BUDDE OM/INT

2753

5200 ← 259°

4000 → 079°

3700

079°

3000

*3000

6 NM

5.2 NM

0.9

(CFBXN)

CATEGORY	A	B	C	D
S-ILS 8	1555-2½ 828 (800-2½)			
S-LOC 8	1620/50	893 (900-1)	1620-2	893 (900-2)
C CIRCLING	1620-1¼ 842 (900-1¼)	1640-1¼ 862 (900-1¼)	2240-3 1462 (1500-3)	2320-3 1542 (1600-3)

GS 3.00°
TCH 60

1800 ↑

4600 hdg 210°

VTU R-086

*LOC only

* LOC only