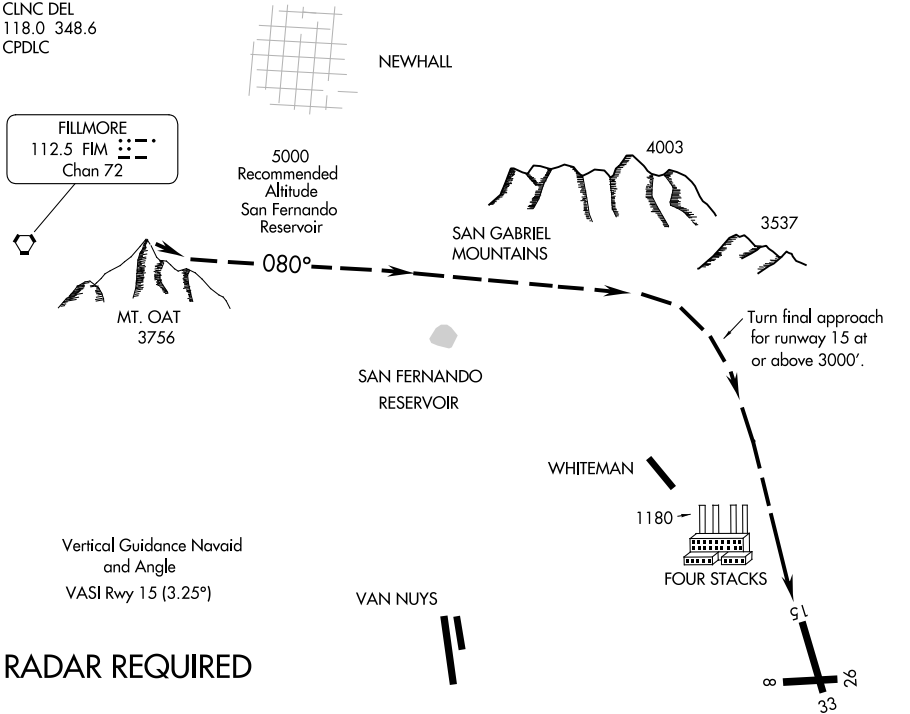


D-ATIS
134.5
SOCAL APP CON
134.2 338.2
BURBANK TOWER
118.7 254.3
GND CON
123.9 348.6
CLNC DEL
118.0 348.6
CPDLC

FILLMORE
112.5 FIM
Chan 72



Vertical Guidance Navaid
and Angle
VASI Rwy 15 (3.25°)

RADAR REQUIRED

Weather Minimums: 5500 feet ceiling
and 5 mile visibility.

1 NM

2

3

4

5

6

7

8

9

10

11

12

13

14

15

16

FOUR STACKS VISUAL APPROACH RWY 15

When Visual Approaches to Runway 15 are in progress, clearances will be given to aircraft from the Northwest thru Northeast utilizing the following phraseology:

"(IDENT) CLEARED FOR FOUR STACKS VISUAL APPROACH TO RUNWAY 15."