

25051

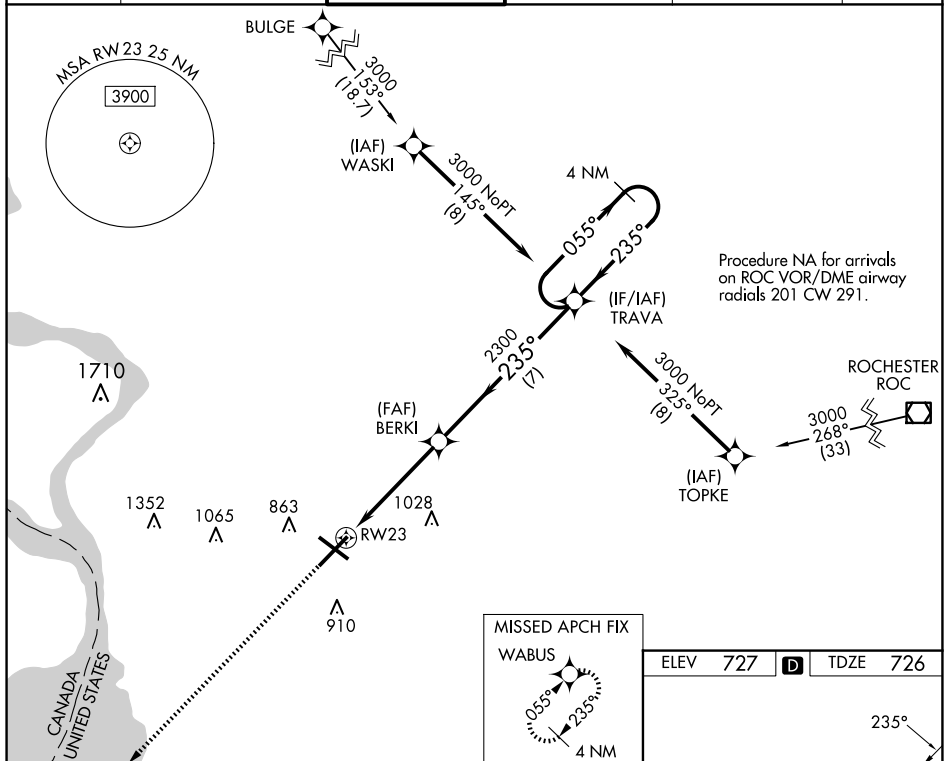
RNAV (GPS) Y RWY 23
BUFFALO NIAGARA INTL (BUF)

ALSF-2



MISSED APPROACH: Climb to 3000
direct WABUS and hold.

D-ATIS 135.35	BUFFALO APP CON 126.15 263.125	BUFFALO TOWER 120.5 257.8	GND CON 133.2 257.8	CLNC DEL 124.7 257.8	CPDLC
------------------	-----------------------------------	------------------------------	------------------------	-------------------------	-------



TRAVA Holding Pattern

4 NM Holding Pattern

055° → 3000
← 235°

BKRI 2300

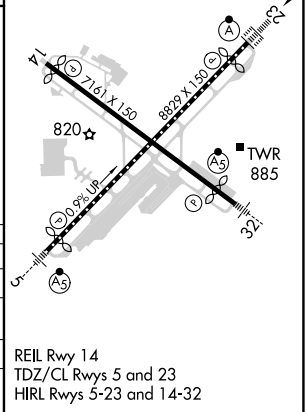
*1.1 NM to RW23

RW23

1.1 NM 3.7 NM 7 NM

GP 3.00° TCH 51

CATEGORY	A	B	C	D
LPV DA		926/18	200 (200-½)	
LNAV/VNAV DA		1050/30	324 (400-⅝)	
LNAV MDA	1140/24	414 (500-½)	1140/40	414 (500-¾)
C CIRCLING	1200-1	473 (500-1)	1220-1½ 493 (500-1½)	1340-2 613 (700-2)



42°56'N-78°44'W

BUFFALO NIAGARA INTL (BUF)
RNAV (GPS) Y RWY 23

NE-2, 10 JUL 2025 to 07 AUG 2025