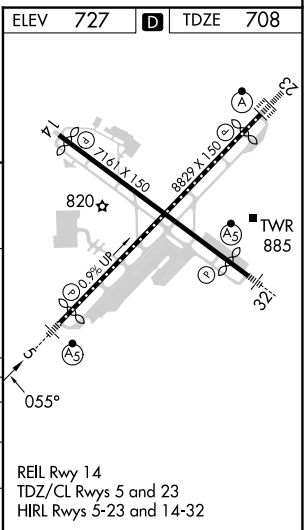
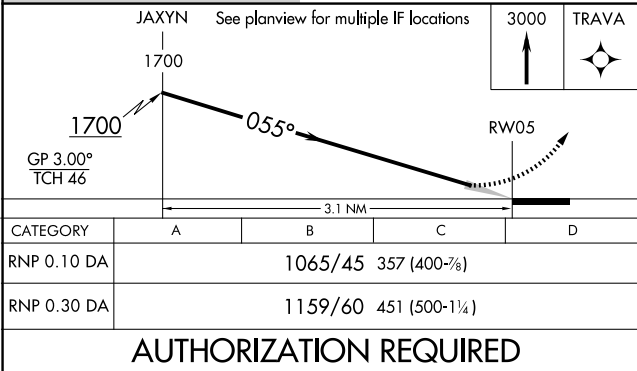
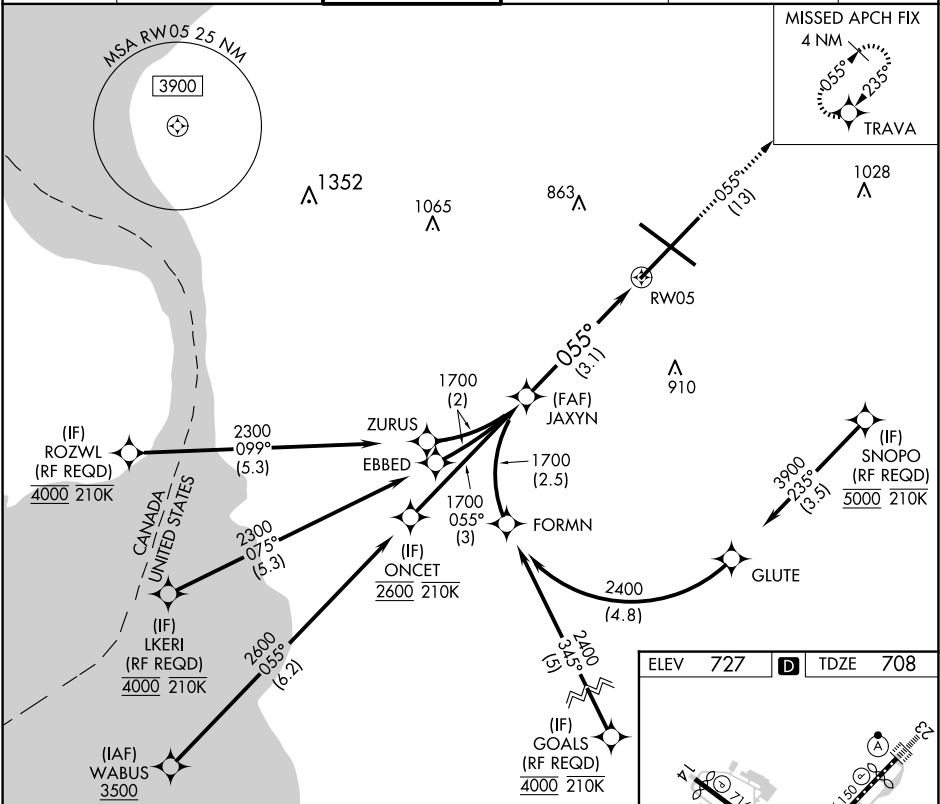


APP CRS	Rwy Idg	<b>7569</b>
<b>055°</b>	TDZE	<b>708</b>
	Apt Elev	<b>727</b>

**RNAV (RNP) Z RWY 5**  
BUFFALO NIAGARA INTL (BUF)

For uncompensated Baro-VNAV systems, procedure NA below -18°C (0°F) or above 54°C (130°F). GPS required. For inoperative MALS, increase RNP 0.10 all Cnts visibility to 1¼. For inoperative MALS, increase RNP 0.30 all Cnts visibility to 1%. <div><div></div><div>MALS</div><div><div></div><div></div></div></div>				MISSED APPROACH: Climb to 3000 on the RNAV missed approach route to TRAVA and hold.	
D-ATIS	BUFFALO APP CON	BUFFALO TOWER	GND CON	CLNC DEL	CPDLC
<b>135.35</b>	<b>126.15 263.125</b>	<b>120.5 257.8</b>	<b>133.2 257.8</b>	<b>124.7 257.8</b>	



NE-2, 10 JUL 2025 to 07 AUG 2025

NE-2, 10 JUL 2025 to 07 AUG 2025