

BUFFALO, NEW YORK

AL-65 (FAA)

25051

APP CRS	Rwy Idg	7569
235°	TDZE	726
	Apt Elev	727

RNAV (RNP) Z RWY 23  
BUFFALO NIAGARA INTL (BUF)

BUFFALO NIAGARA INTL (BUF)

RNP AR APCH.

**T** For uncompensated Baro-VNAV systems, procedure NA below  $-18^{\circ}\text{C}$  or above  $54^{\circ}\text{C}$ . For inop ALSF, increase RNP 0.10 all Cats visibility to  $1\frac{1}{4}$ . For inop ALSF, increase RNP 0.20 all Cats visibility to  $1\frac{1}{2}$ . For inop ALSF, increase RNP 0.30 all Cats visibility to  $1\frac{3}{4}$ .

ALSF-2



**MISSED APPROACH:** Climb to 3000 on the RNAV missed approach route to WABUS and hold.

D-ATIS  
**135.35**

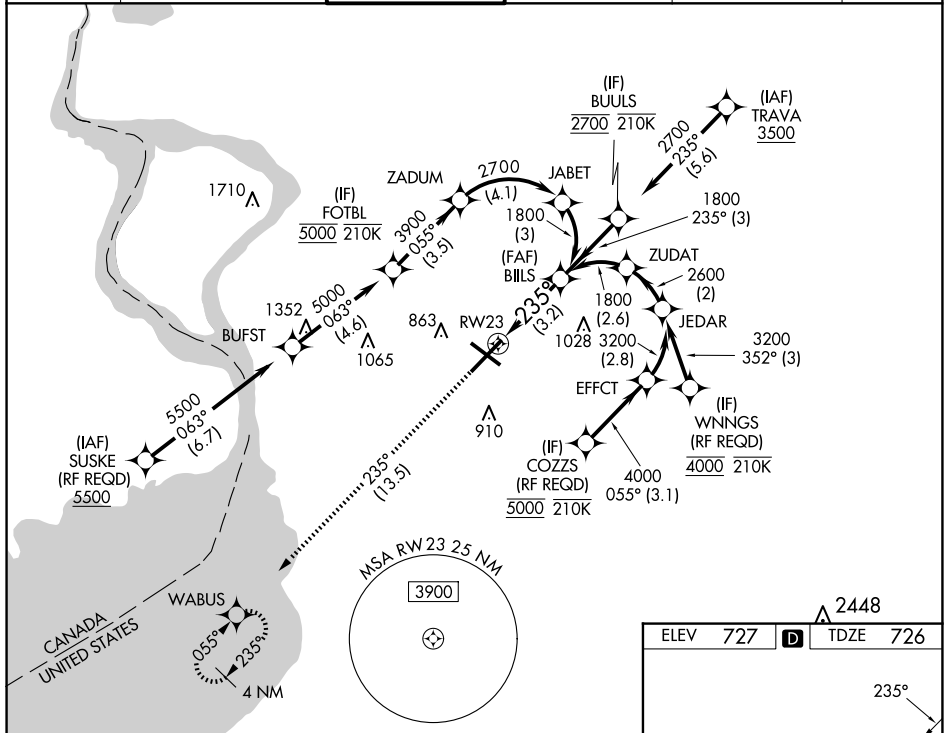
BUFFALO APP CON  
126.15 263.125

BUFFALO TOWER  
**120.5 257.8**

GND CON  
133.2 257.8

CLNC DEL  
**124.7 257.8**

CPDLC



3000  
↑  
tr 235

WABUS

See planview for multiple IF locations.

RW23

B||LS

1800

GP 3.00°  
TCH 51

[illegible]

A

---

Q

--	--

RNP 0.10 DA

1114/45 388 (400-7/8)

RNP 0 20 DA

1170/55 444 (500-1)

RNP 0.30 DA

1228-1¼ 502 (600-1¼)

**AUTHORIZATION REQUIRED**

BUFFALO, NEW YORK  
Orig-B 13SEP18

42°56'N-78°44'W

BUFFALO NIAGARA INTL (BUF)

RNAV (RNP) Z RWY 23

NE-2, 10 JUL 2025 to 07 AUG 2025