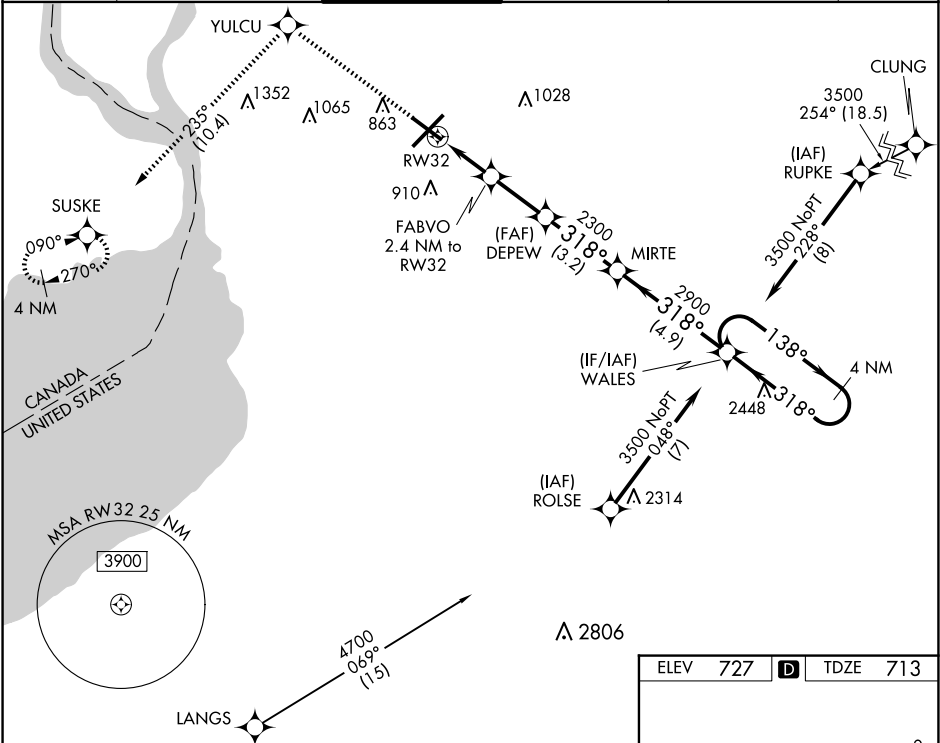


WAAS CH 81811 W32A	APP CRS 318°	Rwy Idg TDZE Apt Elev 6121 713 727
--	------------------------	--

RNAV (GPS) RWY 32
BUFFALO NIAGARA INTL (BUF')

RNP APCH - GPS	MALSR	MISSED APPROACH: Climb to 3000 direct YULCU on track 235° to SUSKE and hold.
For uncompensated Baro-VNAV systems LNAV/VNAV NA below -17°C or above 54°C. For inop ALS, increase LNAV/VNAV visibility all Cats to 1 SM. Inop table does not apply to LPV all Cats.		

D-ATIS 135.35	BUFFALO APP CON 126.15 263.125	BUFFALO TOWER 120.5 257.8	GND CON 133.2 257.8	CLNC DEL 124.7 257.8	CPDLC
-------------------------	--	-------------------------------------	-------------------------------	--------------------------------	-------



3000	YULCU	tr 235°	SUSKE
* LNAV only.			
RW32 2.4 NM to RW32			
* 1.2 NM to RW32			
1.2 NM 1.2 NM 2.4 NM 3.2 NM 4.9 NM			
CATEGORY	A	B	C
LPV DA	913-1/2	200 (200-1/2)	
LNAV/ VNAV DA	1092-5/8	379 (400-5/8)	
LNAV MDA	1140-1/2 427 (500-1/2)	1140-3/4 427 (500-3/4)	
CIRCLING	1200-1 473 (500-1)	1220-1 493 (500-1 1/2)	1340-2 613 (700-2)

