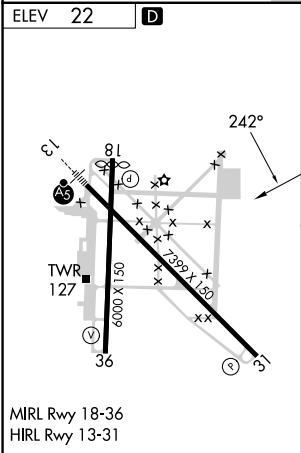
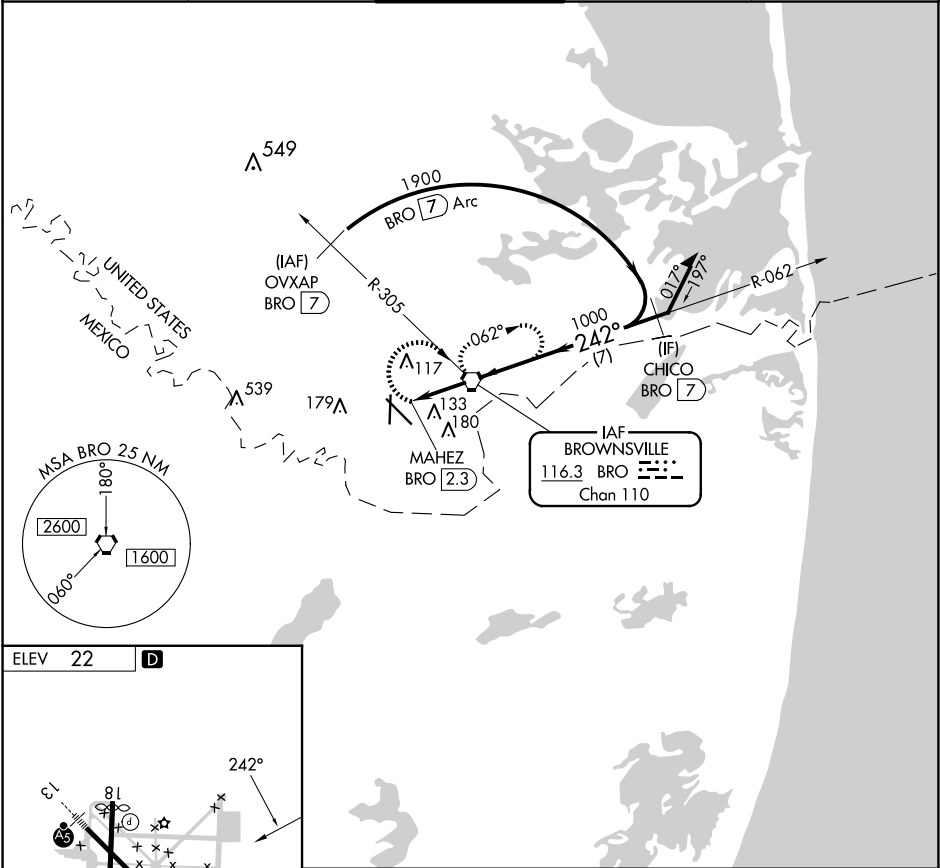


▼ When local altimeter not received, use Port Isabel altimeter setting and increase all MDA 40 feet and Circling Cat D visibility ¼ SM.

▲ MISSED APPROACH: Climbing right turn to 1900 direct BRO VORTAC and hold. (TACAN aircraft climbing right turn to 1900 on BRO R-062 to CHICO/BRO 7 DME and hold NE, right turn, 242° inbound).

ATIS 128.55	VALLEY APP CON 119.5 257.6	BROWNSVILLE TOWER★ 118.9(CTAF) 239.3	GND CON 121.9	UNICOM 122.95
----------------	-------------------------------	---	------------------	------------------



FAF to MAP 2.3 NM						CATEGORY	A	B	C	D
Knots	60	90	120	150	180		440-1	540-1	540-1½	680-2
Min:Sec	2:18	1:32	1:09	0:55	0:46	☐ CIRCLING	418 (500-1)	518 (600-1)	518 (600-1½)	658 (700-2)