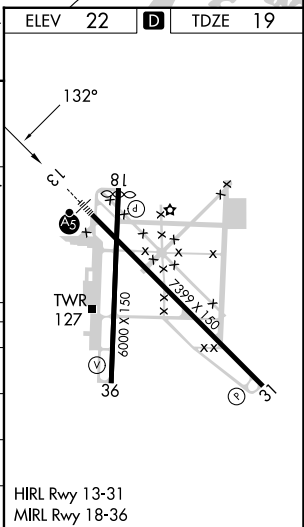
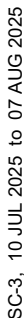



RNAV (GPS) RWY 13  
BROWNSVILLE/SOUTH PADRE ISLAND INTL (BRO)

**MISSED APPROACH:**  
Climb to 500 then  
climbing left turn to  
2000 direct FIRTA  
and hold.

UNICOM  
122.95

		6.2 NM	4.4 NM	1.3 NM	
CATEGORY	A	B	C	D	
LPV DA **	219/24		200 (200-½)		
LNAV/VNAV DA	373/30		354 (400-⅝)		
LNAV MDA	480/24 461 (500-½)		480/50 461 (500-1)		
 CIRCLING	480-1 458 (500-1)	540-1 518 (600-1)	540-1½ 518 (600-1½)	680-2 658 (700-2)	