





BOZEMAN, MONTANA

AL-59 (FAA)

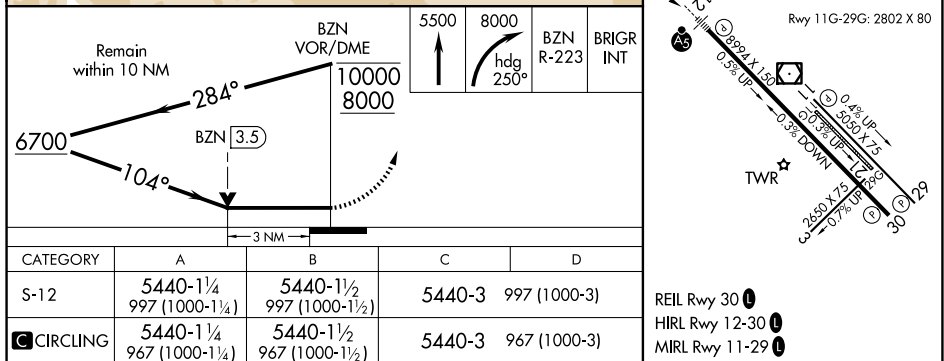
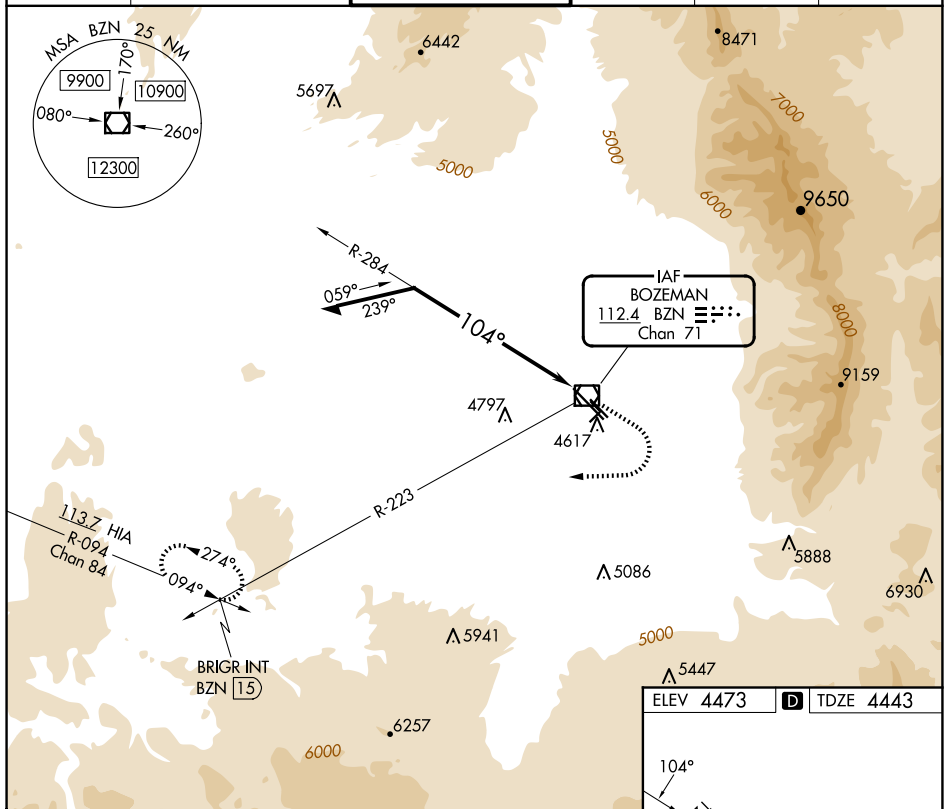
25163

VOR/DME BZN <b>112.4</b> Chan <b>71</b>	APP CRS <b>104°</b>	Rwy Ldg <b>8994</b> TDZE <b>4443</b> Apt Elev <b>4473</b>
---	------------------------	---

VOR RWY 12  
BOZEMAN YELLOWSTONE INTL (BZN)

   -22°C	Circling NA to Rwy 3-21 and 11-29. Inop table does not apply.	MALSR   	MISSED APPROACH: Climb to 5500 then climbing right turn to 8000 on heading 250° and BZN VOR/DME R-223 to BRGR INT/15 DME and hold.
--	--	--	--

ATIS <b>135.425</b>	BIG SKY APP CON★ <b>118.975 226.675</b>	BOZEMAN TOWER★ <b>118.2 (CTAF) 0</b>	GND CON <b>121.8</b>	CLNC DEL <b>124.05</b>	UNICOM <b>122.95</b>
------------------------	--	---	-------------------------	---------------------------	-------------------------



BOZEMAN, MONTANA  
Amdt 15C 03JAN19

BOZEMAN YELLOWSTONE INTL (BZN)  
VOR RWY 12

45°47'N-111°09'W

NW-1, 10 JUL 2025 to 07 AUG 2025

NW-1, 10 JUL 2025 to 07 AUG 2025