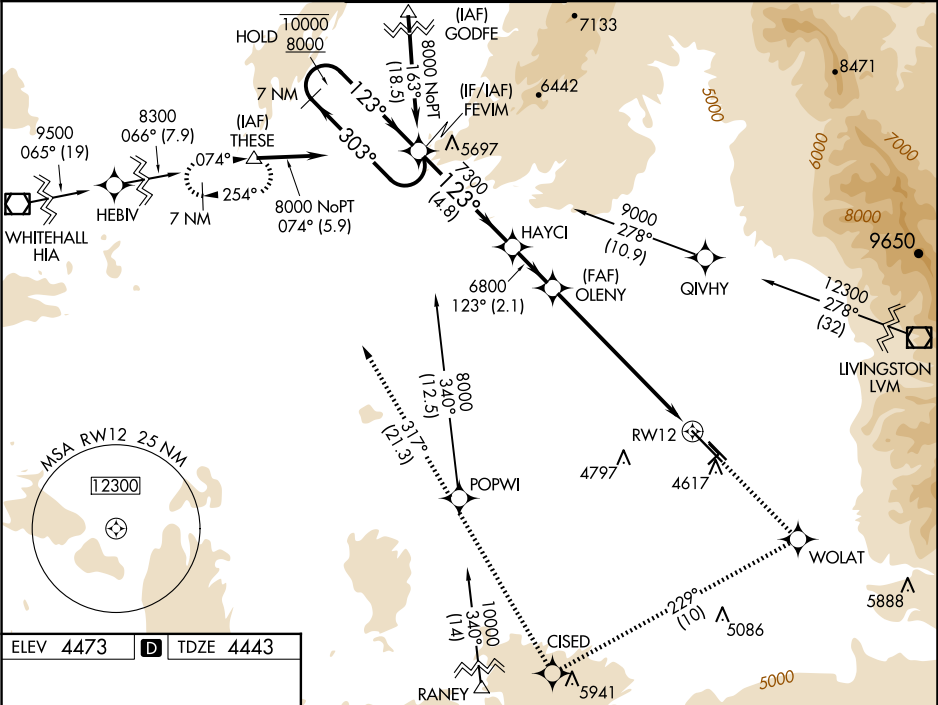


WAAS CH 72816 W12A	APP CRS 123°	Rwy Ldg TDZE Apt Elev	8994 4443 4473
--	------------------------	-----------------------------	---

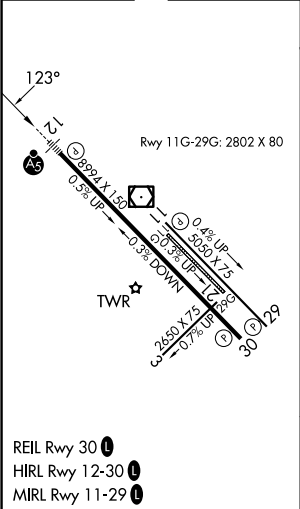
RNAV (GPS) Y RWY 12



BOZEMAN YELLOWSTONE INTL (BZN)

RNP APCH.				MALSR	MISSED APPROACH: Climb to 8300 direct WOLAT and right turn on track 229° to CISED and on track 317° to THESE and hold.	
Circling NA to Rwys 3-21 and 11-29. For uncompensated Baro-VNAV systems, procedure NA below -23°C or above 49°C. For inop ALS, increase -22°C LNAV/VNAV visibility to 1½ SM and LNAV visibility Cats C and D to 1½ SM.						
ATIS 135.425	BIG SKY APP CON★ 118.975 226.675	BOZEMAN TOWER★ 118.2 (CTAF) 0	GND CON 121.8	CLNC DEL 124.05	UNICOM 122.95	



ELEV 4473	D	TDZE 4443
-----------	----------	-----------



7 NM Holding Pattern		FEVIM	8300 ↑	WOLAT ✧	 tr 229°	CISED ✧	tr 317°	THESE △
10000 ← 303° 8000 → 123°		HAYCI	OLENY	* LNAV only				
GP 3.00° TCH 53			6800	*1.5 NM to RW12				
		4.8 NM	2.1 NM	5.7 NM	1.5 NM			
CATEGORY	A	B	C	D				
LPV DA	4693-½ 250 (300-½)							
LNAV/ VNAV DA	5094-1¾ 651 (700-1¾)							
LNAV MDA	4960-½	517 (500-½)	4960-1 517 (500-1)	4960-1¼ 517 (500-1¼)				
 CIRCLING	4960-1	487 (500-1)	5160-2 687 (700-2)	5360-3 887 (900-3)				