

LOC I-BZN 109.3	APP CRS 123°	Rwy Ldg 8994 TDZE 4443 Apt Elev 4473
---------------------------	------------------------	---

ILS or LOC RWY 12
BOZEMAN YELLOWSTONE INTL (BZN)

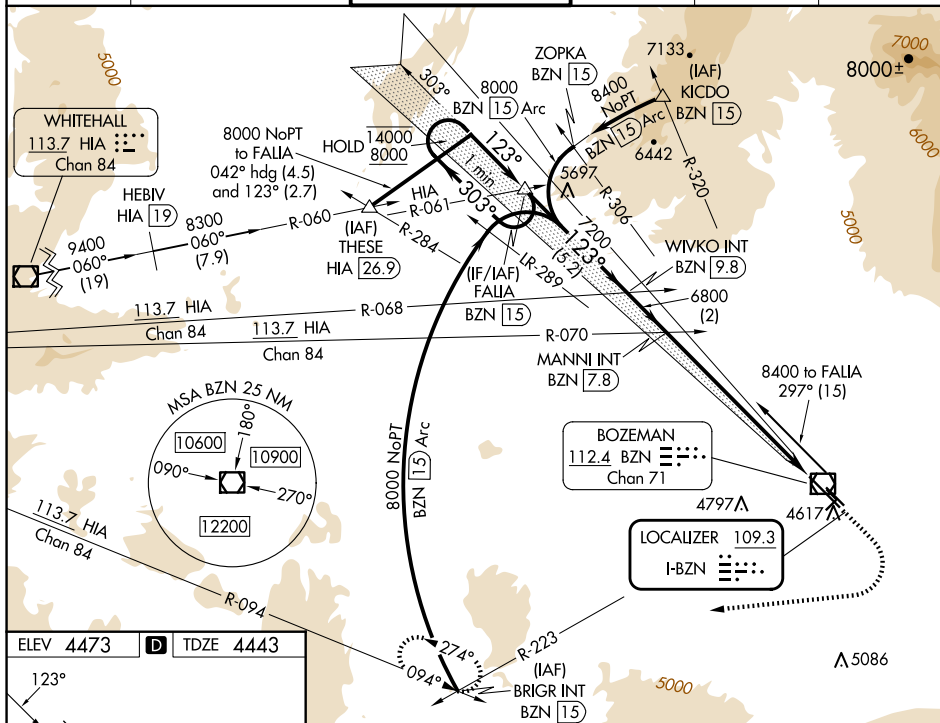
RADAR required for procedure entry at BRIGR INT.

T Circling NA to Rwy's 3-21 and 11-29. DME from BZN
A VOR/DME. DME use requires simultaneous reception
❄ -22°C of I-BZN and BZN DME. For inop ALS, increase
S-LOC 12 Cat C/D visibility to 2 SM.

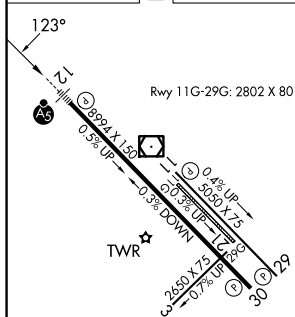
MALSR
A5

MISSED APPROACH: Climb to 5200 then climbing right turn to 9000 on heading 250° and on BZN VOR/DME R-223 to BRIGR INT/BZN 15 DME and hold. Continue climb-in-hold to 9000.

ATIS 135.425	BIG SKY APP CON★ 118.975 226.675	BOZEMAN TOWER★ 118.2 (CTAF) 0	GND CON 121.8	CLNC DEL 124.05	UNICOM 122.95
------------------------	--	---	-------------------------	---------------------------	-------------------------



ELEV 4473	D	TDZE 4443
-----------	----------	-----------



REIL Rwy 30 L

HIRE Rwy 12-3

MIRI Pwv 11-2

FAF to MAP 7.3 NM

Knots	60	90	120	150	180
Min:Sec	7:18	4:52	3:39	2:55	2:26

One Minute Holding Pattern 14000 ← 303° 8000 ← 123° →		FALIA BZN (15) WIVKO INT BZN (9.8) MANNI INT BZN (7.8)		5200 ↑ 9000 ↗ hdg 250°		BZN R-223 BRIGR INT	
GS 3.00° TCH 53		7200 6800		6800 6800		BZN (2.6) BZN (0.5)	
CATEGORY A		B		C		D	
S-ILS 12		4643-1½		200 (200-1½)			
S-LOC 12		5160-1½ 717 (700-1½)		5160-1½ ₈ 717 (700-1½)			
CIRCLING		5160-1 687 (700-1)		5160-2 687 (700-2)		5360-3 887 (900-3)	