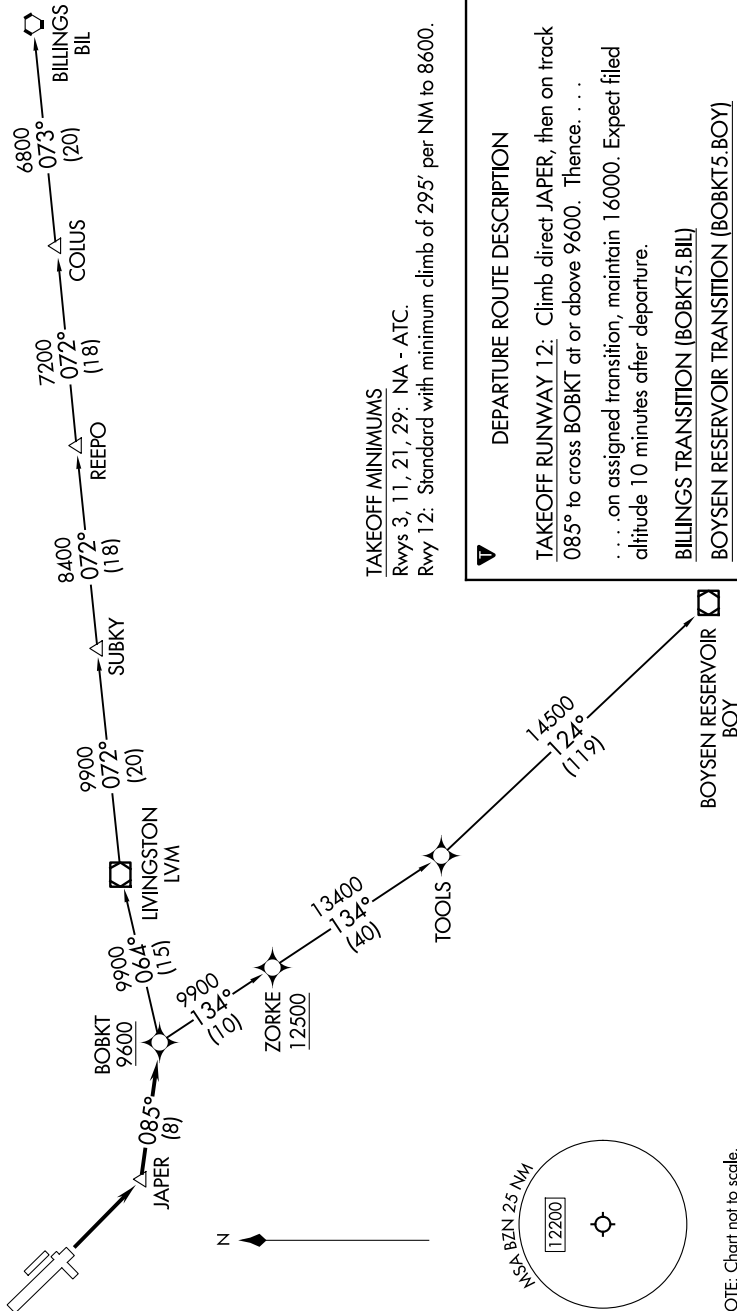


RNAV 1 - GPS.

TOP ALTITUDE:
16000

BIG SKY DEP CON ★	
118.975	226.675
GND CON	121.8
BOZEMAN TOWER ★	
	118.2



TAKEOFF MINIMUMS

Rwys 3, 11, 21, 29: NA - ATC.

Rwy 12: Standard with minimum climb of 295' per NM to 8600.

DEPARTURE ROUTE DESCRIPTION

TAKEOFF RUNWAY 12: Climb direct JAPER, then on track 085° to cross BOBKT at or above 9600. Thence, . . .
 . . . on assigned transition, maintain 16000. Expect filed altitude 10 minutes after departure.

BILLINGS TRANSITION (BOBKT5.BIL)

BOYSEN RESERVOIR TRANSITION (BOBKT5.BOY)

NOTE: Chart not to scale.