

NW-1, 10 JUL 2025 to 07 AUG 2025

BIG SKY APP CON\*

118.975 226.675

SALT LAKE CENTER

118.975 226.675

ATIS

135.425

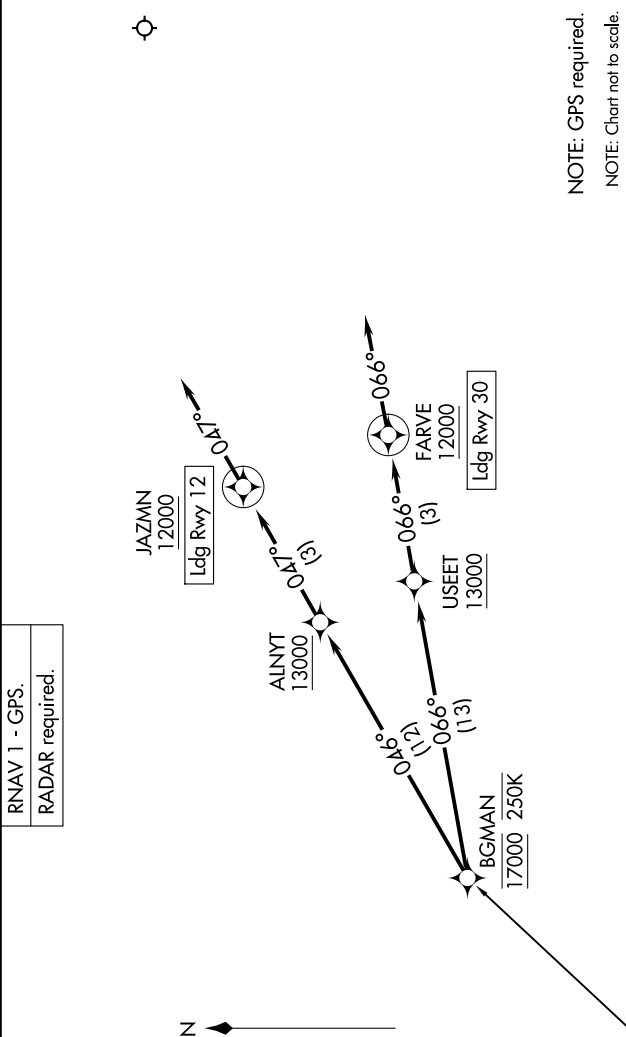
GND CON

121.8

BOZEMAN TOWER\*

118.2

RNAV 1 - GPS.
RADAR required.



**ARRIVAL ROUTE DESCRIPTION**

**KARTS TRANSITION (KARTS.BGMAN1)**

**LANDING RUNWAY 12:** From BGMAN on track 046° to cross ALNYT at or above 13000, then on track 047° to cross JAZMN at or above 12000, then on track 047°. Expect RNAV (RNP) RWY 12 approach or RADAR vectors to final approach course.

**LANDING RUNWAY 30:** From BGMAN on track 066° to cross USEET at or above 13000, then on track 066° to cross FARVE at or above 12000, then on track 066°. Expect RNAV (RNP) RWY 30 approach or RADAR vectors to final approach course.

NW-1, 10 JUL 2025 to 07 AUG 2025