
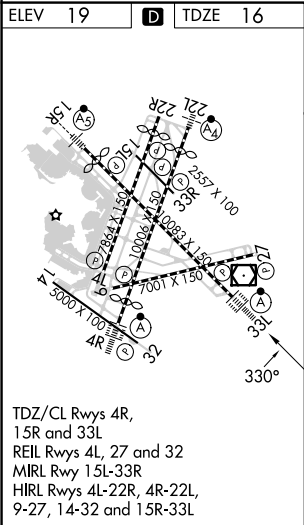
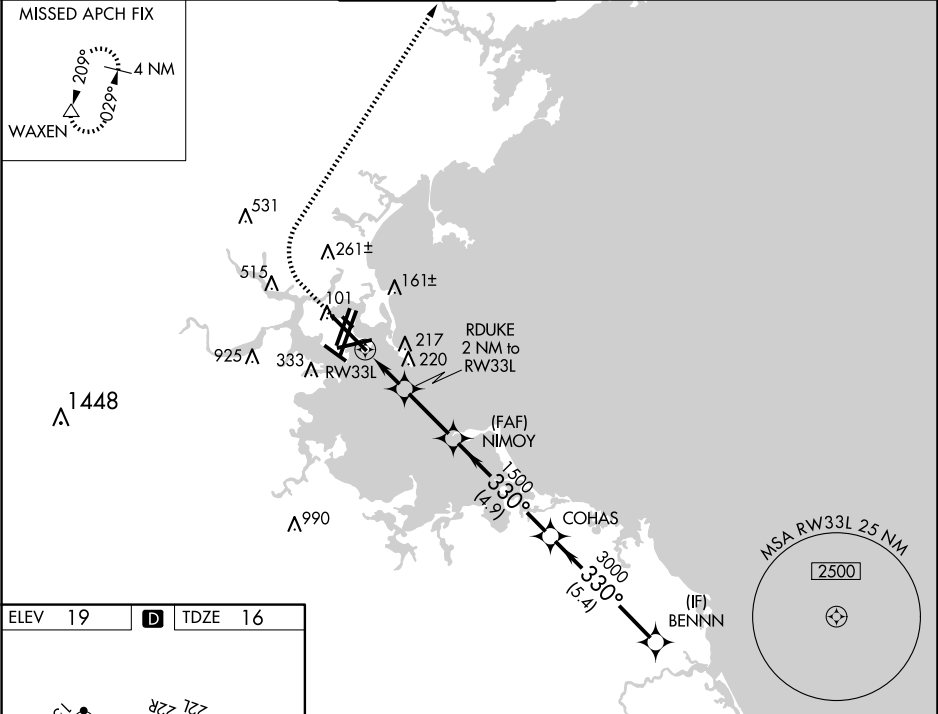


WAAS CH <b>69525</b> <b>W33A</b>	APP CRS <b>330°</b>	Rwy Idg TDZE <b>16</b> Apt Elev <b>19</b>	<b>10083</b>
--	------------------------	---	--------------

RNAV (GPS) Z RWY 33L

GENERAL EDWARD LAWRENCE LOGAN INTL (BOS)

RNP APCH - GPS.				ALSIF-2 		MISSED APPROACH: Climb to 600 then climbing right turn to 3000 direct WAXEN and hold.	
▼ For uncompensated Baro-VNAV systems, LNAV/VNAV NA below -14°C or above 54°C.							
D-ATIS 135.0	BOSTON APP CON 120.6 263.1	BOSTON TOWER 128.8 257.8 (WEST) 132.225 257.8 (EAST)		GND CON 121.75 121.9	CLNC DEL 121.65 257.8		CPDLC



600 3000 WAXEN		VGSI and RNAV glidepath not coincident (VGSI Angle 3.00/TCH 68).			
CATEGORY	A	B	C	D	
LPV DA	216/18 200 (200-½)				
LNAV/VNAV DA	324/24 308 (400-½)				
LNAV MDA	440/24 424 (500-½)		440/40 424 (500-¾)		