

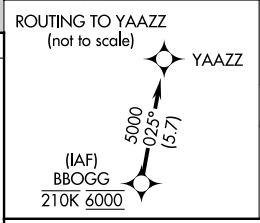
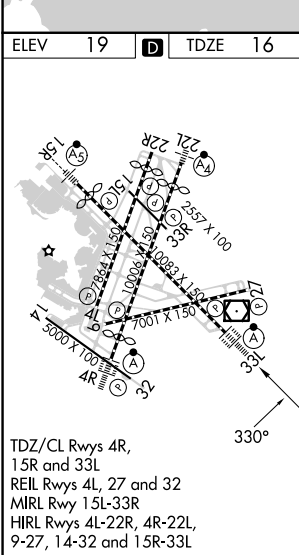
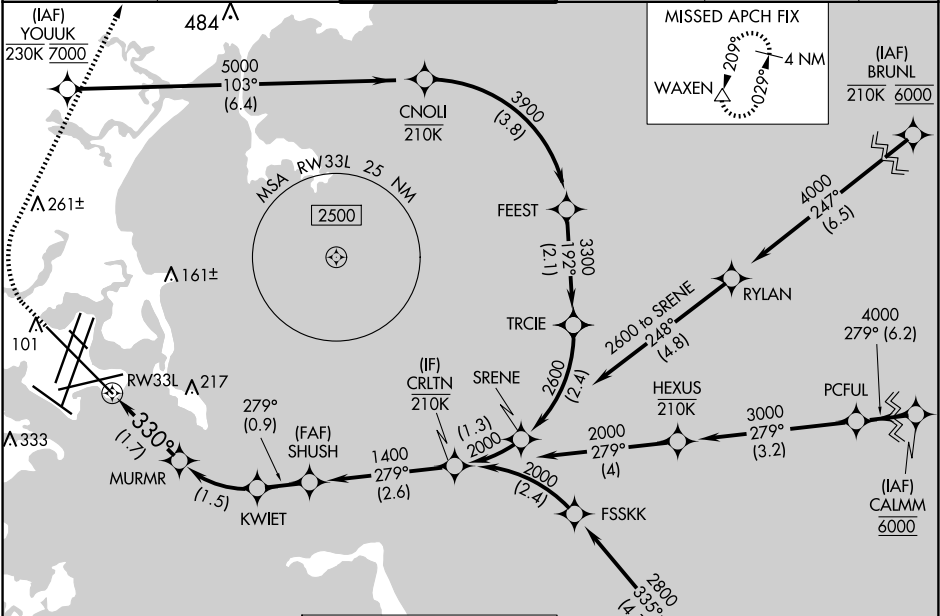
APP CRS	Rwy Idg	<b>10083</b>
<b>330°</b>	TDZE	<b>16</b>
	Apt Elev	<b>19</b>

RNAV (RNP) X RWY 33L

GENERAL EDWARD LAWRENCE LOGAN INTL (BOS)

RNP AR APCH. RF required.		ALSF-2	MISSED APPROACH: Climb to 600 then climbing right turn to 3000 direct WAXEN and hold.
NA For uncompensated Baro-VNAV systems, procedure NA below -14°C or above 54°C. For inop ALS, increase RNP 0.30 all Cnts visibility to RVR 4000.			

D-ATIS	BOSTON APP CON	BOSTON TOWER	GND CON	CLNC DEL	CPDLC
<b>135.0</b>	<b>120.6 263.1</b>	<b>128.8 257.8 (WEST)</b> <b>132.225 257.8 (EAST)</b>	<b>121.75 121.9</b>	<b>121.65 257.8</b>	



VGSI and RNAV glidepath not coincident (VGSI Angle 3.00/TCH 68).			
CRLTN	SHUSH	KWIET	MURMR
2000	1400	1099	612
GP 3.00°	1400		330°
TCH 52			
	2.6 NM	0.9 NM	1.5 NM
1.7 NM			
CATEGORY	A	B	C
RNP 0.30 DA	273/24	257 (300-½)	
AUTHORIZATION REQUIRED			