

WAAS CH 77738 W04B	APP CRS 037°	Rwy Idg 7864 TDZE 14 Apt Elev 19
--	------------------------	---

RNAV (GPS) RWY 4L

GENERAL EDWARD LAWRENCE LOGAN INTL (BOS)

RNP APCH - GPS.

▼ For uncompensated Baro-VNAV systems, LNAV/VNAV NA below -14°C or above 54°C. Use of FD or AP required during simultaneous operations. Simultaneous operations require use of vertical guidance; maintain last assigned altitude until established on glidepath. LNAV procedure NA during simultaneous operations. Rwy 4L helicopter visibility reduction below RVR 4000 NA. When control tower reports tall vessels in approach area: increase LPV DA to 369 and all Cats visibility to RVR 5500. LPV and LNAV/VNAV NA when vessels taller than 137 feet present.

MISSED APPROACH: Climb to 700 then climbing left turn to 3000 direct UJEGE and hold, continue climb-in-hold to 3000.

* Missed approach requires minimum climb of 425 feet per NM to 900.

D-ATIS	BOSTON APP CON		BOSTON TOWER		GND CON		CLNC DEL		CPDLC
135.0	120.6	263.1	128.8	257.8 (WEST)	121.75	121.9	121.65	257.8	
			132.225	257.8 (EAST)					

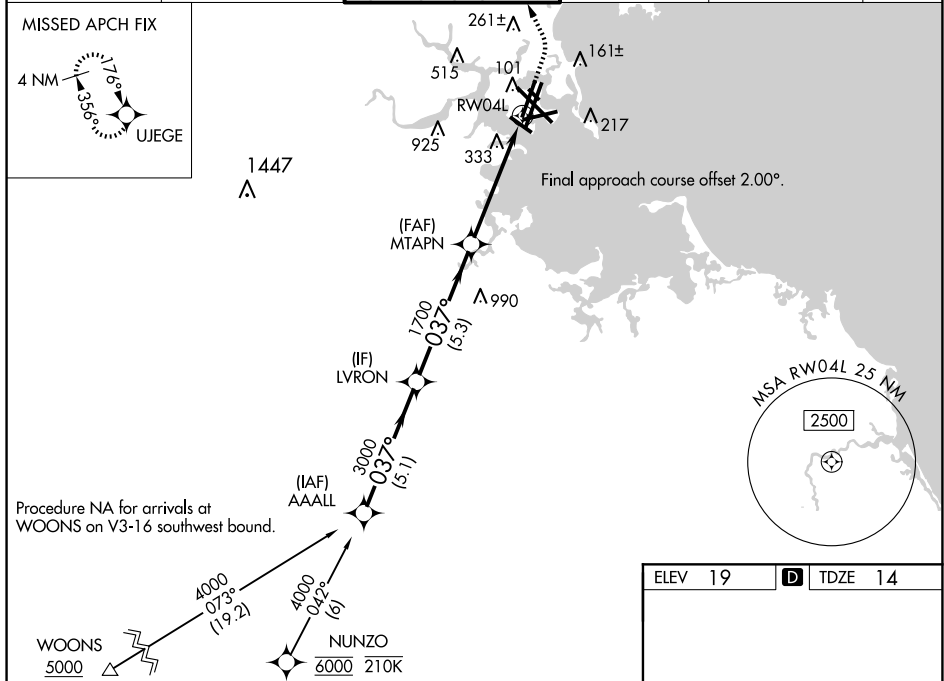


Figure 1 illustrates a flight profile with the following details:

- Altitude Profile:** Starts at 4000, descends to 3000 at LVRON, and then to 1700 at MTAPN. The final segment D is a curved path to RW04L.
- Segment Distances:**
 - Segment A: 5.1 NM
 - Segment B: 5.3 NM
 - Segment C: 3.3 NM
 - Segment D: 1.7 NM
- Waypoints and Obstacles:** AAALL, LVRON, MTAPN, and RW04L are marked. A 1.7 NM distance is also indicated from MTAPN to RW04L.
- Other Information:** GP 3.10° TCH 50 and UJEGE symbol are shown.