

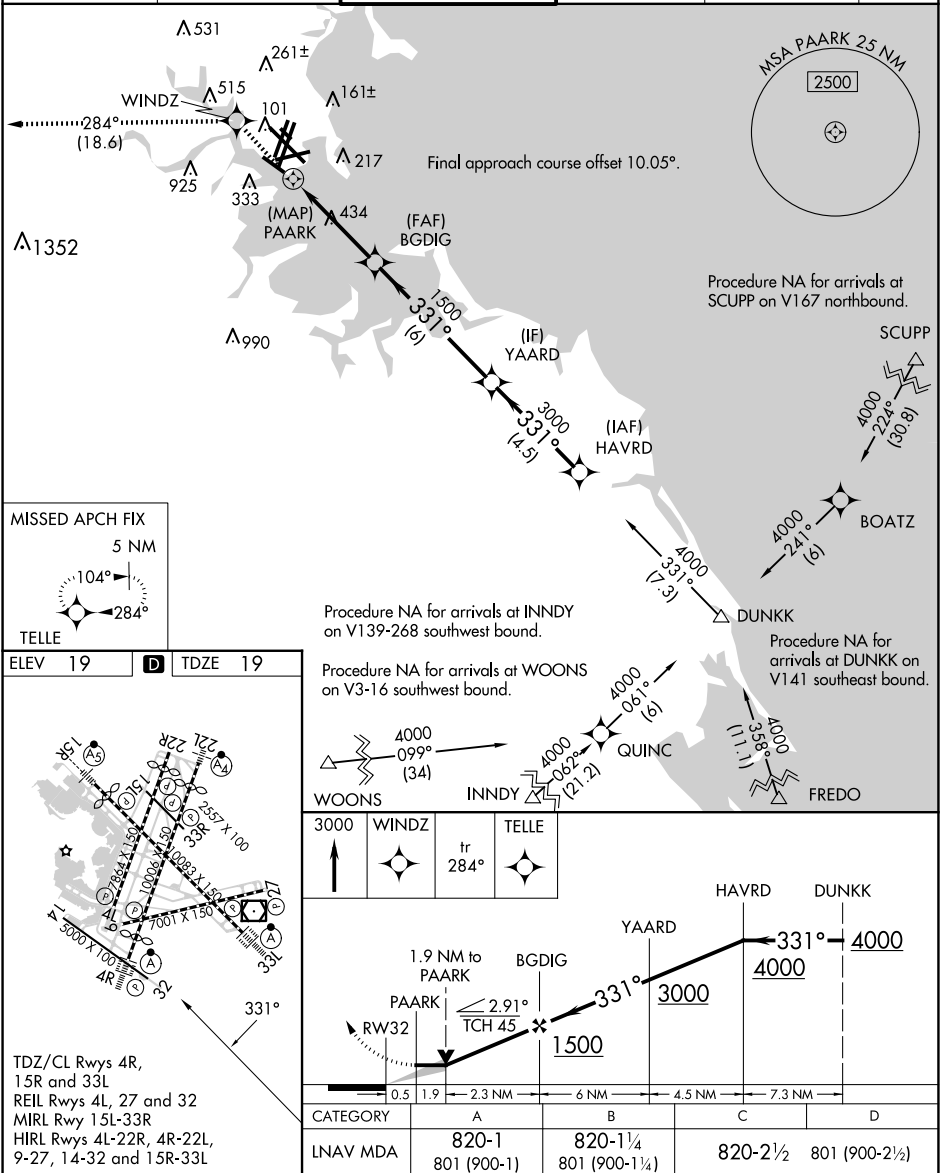
APP CRS	Rwy ldg	5000
331°	TDZE	19
	Apt Elev	19

RNAV (GPS) RWY 32  
GENERAL EDWARD LAWRENCE LOGAN INTL (BOS)

RNP APCH - GPS.

MISSED APPROACH: Climb to 3000 direct WINDZ and on track 284° to TELLE and hold.

D-ATIS	BOSTON APP CON	BOSTON TOWER	GND CON	CLNC DEL	CPDLC
135.0	120.6 263.1	128.8 257.8 (WEST) 132.225 257.8 (EAST)	121.75 121.9	121.65 257.8	



NE-1, 10 JUL 2025 to 07 AUG 2025

NE-1, 10 JUL 2025 to 07 AUG 2025