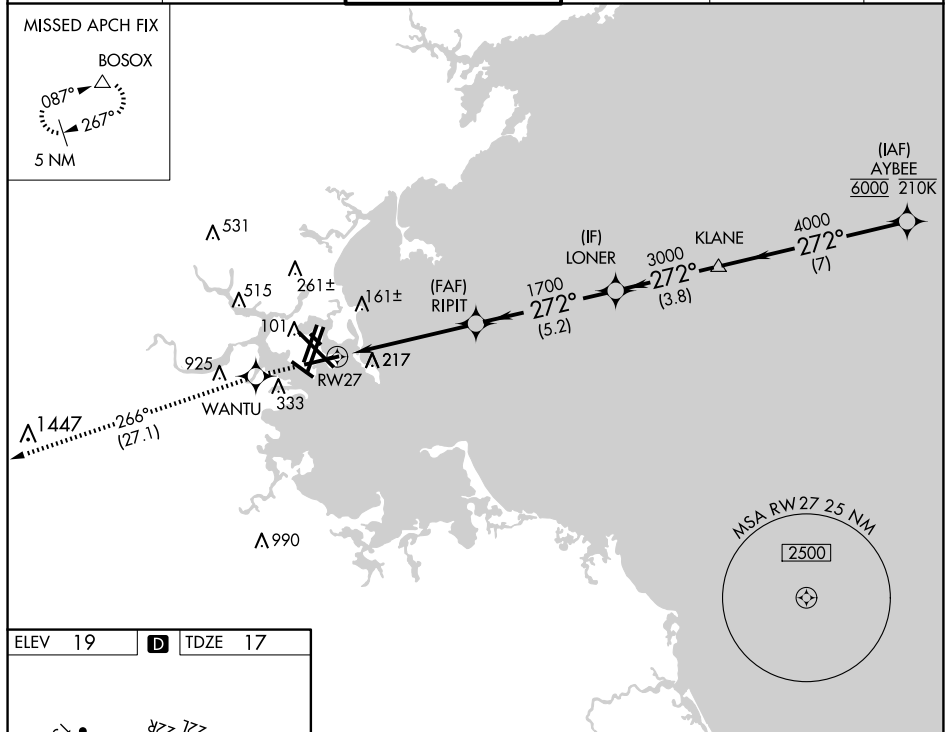


RNAV (GPS) RWY 27

GENERAL EDWARD LAWRENCE LOGAN INTL (BOS)

T For uncompensated Baro-VNAV systems, LNAV/VNAV NA below -15°C or above 54°C.

MISSED APPROACH: Climb to 3000
direct WANTU and on track 266°
to BOSOX and hold.

BOSOX

TDZ/CL Rwy 4R,
15R and 33L
REIL Rwy 4L, 27 and 32
MIRL Rwy 15L-33R
HIRL Rwy 4L-22R, 4R-22L,
9-27, 14-32 and 15R-33L

| | | | | | | | |
|------------------|--|------------|------------|---|---|--|---|
| 3000 ↑ | WANTU ✦ | tr 266° | BOSOX △ | VGS1 and RNAV glidepath not coincident (VGS1 Angle 3.00/TCH 71). | | | |
| | | | | | | | |
| CATEGORY | A | | B | | C | | D |
| RNAV/ VNAV DA | 510-1 $\frac{3}{8}$ 493 (500-1 $\frac{3}{8}$) | | | | | | |
| RNAV MDA | 640-1 $\frac{1}{2}$ 623 (700-1 $\frac{1}{2}$) | | | 640-1 $\frac{3}{4}$ 623 (700-1 $\frac{3}{4}$) | | | |

42°22'N-71°00'W

RNAV (GPS) RWY 27