

NE-1, 10 JUL 2025 to 07 AUG 2025

BOSTON, MASSACHUSETTS

AL-58 (FAA)

24193

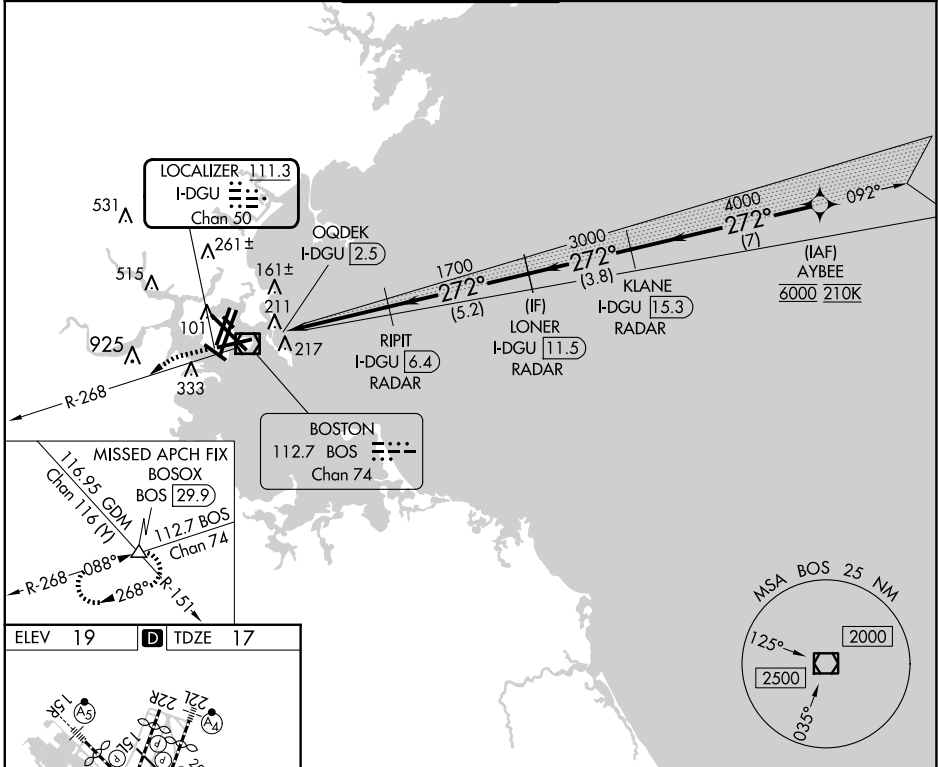
LOC/DME I-DGU 111.3 Chan 50	APP CRS 272°	Rwy Idg 7001 TDZE 17 Apt Elev 19
---	------------------------	---

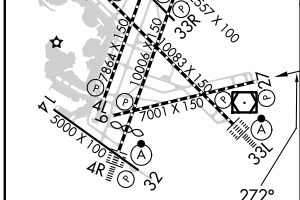
ILS or LOC RWY 27

GENERAL EDWARD LAWRENCE LOGAN INTL (BOS)

RNP APCH - GPS, From AYBEE.	MISSED APPROACH: Climb to 3000 on BOS VOR/DME R-268 to BOSOX INT/BOS 29.9 DME and hold.
RADAR required for procedure entry. DME or RADAR required.	

D-ATIS 135.0	BOSTON APP CON 120.6 263.1	BOSTON TOWER 128.8 257.8 (WEST) 132.225 257.8 (EAST)	GND CON 121.75 121.9	CLNC DEL 121.65 257.8	CPDLC
------------------------	--------------------------------------	--	--------------------------------	---------------------------------	-------



ELEV 19	D	TDZE 17
		
TDZ/CL Rwy 4R, 15R and 33L REIL Rwy 4L, 27 and 32 MRL Rwy 15L-33R HIRL Rwy 4L-22R, 4R-22L, 9-27, 14-32 and 15R-33L		
FAF to MAP 3.9 NM		
Knots	60	90 120 150 180
Min:Sec	3:48	2:32 1:54 1:31 1:16

3000	BOSOX	VGSI and ILS glidepath not coincident (VGSI Angle 3.00/TCH 71).		AYBEE
BOS R-268		RIPIT I-DGU [6.4] RADAR	KLANE I-DGU [15.3] RADAR	6000
		QOQDEK I-DGU [2.5]	LONER I-DGU [11.5] RADAR	4000
		1700	3000	GS 3.00° TCH 57
1.2	3.9 NM	5.2 NM	3.8 NM	7 NM
CATEGORY	A	B	C	D
S-ILS 27		460-1½	443 (500-1½)	
S-LOC 27		460-1½	443 (500-1½)	

BOSTON, MASSACHUSETTS
Amdt 3A 13JUN24

GENERAL EDWARD LAWRENCE LOGAN INTL (BOS)
42°22'N-71°00'W
ILS or LOC RWY 27

NE-1, 10 JUL 2025 to 07 AUG 2025