

NE-1, 10 JUL 2025 to 07 AUG 2025

BOSTON, MASSACHUSETTS

AL-58 (FAA)

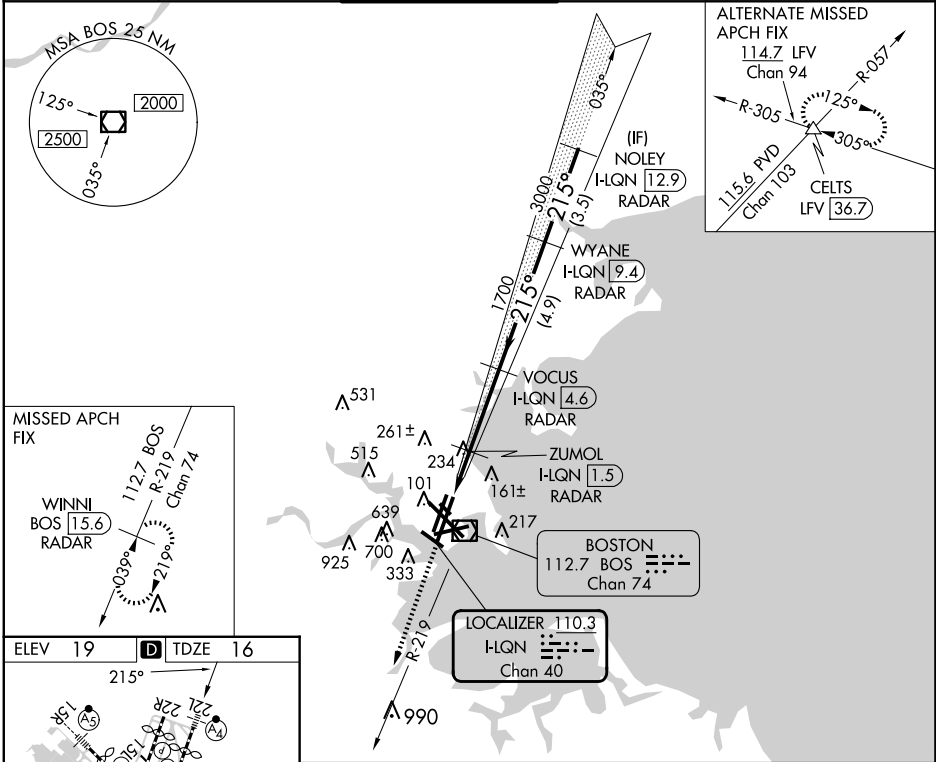
24193

LOC/DME I-LQN	APP CRS	Rwy Idg	8806
110.3	215°	TDZE	16
Chan 40		Apt Elev	19

ILS or LOC RWY 22L
GENERAL EDWARD LAWRENCE LOGAN INTL (BOS)

RADAR required for procedure entry. DME or RADAR required.		MALSF	MISSED APPROACH: Climb to 3000 on BOS VOR/DME R-219 to WINNI/ BOS 15.6 DME/RADAR and hold.	
Inop table does not apply to S-ILS 22L.				

D-ATIS	BOSTON APP CON	BOSTON TOWER	GND CON	CLNC DEL	CPDLC
135.0	120.6 263.1	128.8 257.8 (WEST) 132.225 257.8 (EAST)	121.75 121.9	121.65 257.8	



ELEV 19	TDZE 16
215°	
TDZ/CL Rwy 4R, 15R and 33L REIL Rwy 4L, 27 and 32 MIRL Rwy 15L-33R HIRL Rwy 4L-22R, 4R-22L, 9-27, 14-32 and 15R-33L	
FAF to MAP 5.1 NM	
Knots	60 90 120 150 180
Min:Sec	5:06 3:24 2:33 2:02 1:42

3000	WINNI BOS 15.6	VGSI and ILS glidepath not coincident (VGSI Angle 3.00/TCH 71).	
BOS R-219	ZUMOL I-LQN 1.5 RADAR	VOCUS I-LQN 4.6 RADAR	WYANE I-LQN 9.4 RADAR
	I-LQN DME ANT. 0.9	1700	215° 4000
		700	GS 3.00° TCH 55
	1.4 NM	0.6	3.1 NM
CATEGORY	A	B	C
S-ILS 22L	216/40 200 (200-¾)		
S-LOC 22L	540/40	524 (600-¾)	540-1¼ 524 (600-1¼)

BOSTON, MASSACHUSETTS
Amdt 8E 13JUN24

GENERAL EDWARD LAWRENCE LOGAN INTL (BOS)
42°22N-71°00'W
ILS or LOC RWY 22L

NE-1, 10 JUL 2025 to 07 AUG 2025