

LOC/DME I-BOS	APP CRS	Rwy Ldg	8851
110.3	035°	TDZE	18
Chan 40		Apt Elev	19

ILS RWY 4R (CAT II & III)  
GENERAL EDWARD LAWRENCE LOGAN INTL (BOS)

RNP APCH - GPS. From GOSHI.  
DME required.

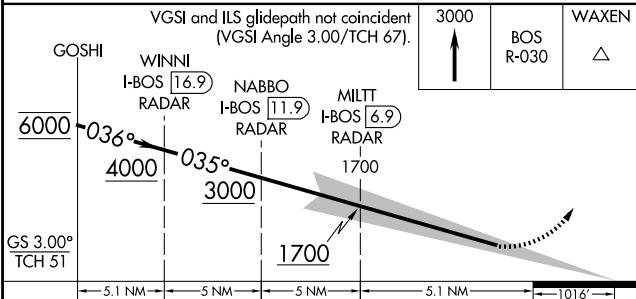
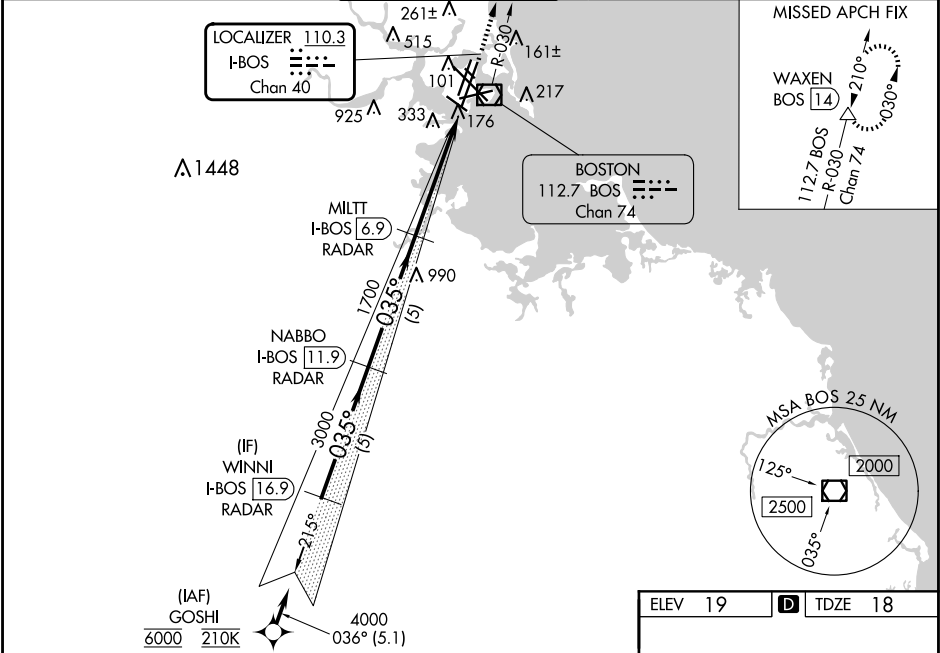
When control tower reports tall vessels in approach area, procedure NA. Simultaneous approach authorized. Simultaneous operations require use of vertical guidance; maintain last assigned altitude until established on glideslope. Use of FD or AP required during simultaneous operations. CAT II: RVR 1000 authorized with specific OPSPEC, MSPEC or LOA approval and use of Autoland or HUD to touchdown.

ALSF-2



MISSED APPROACH: Climb to 3000 on BOS VOR/DME R-030 to WAXEN/BOS 14 DME and hold.

D-ATIS	BOSTON APP CON	BOSTON TOWER	GND CON	CLNC DEL	CPDLC
135.0	120.6 263.1	128.8 257.8 (WEST) 132.225 257.8 (EAST)	121.75 121.9	121.65 257.8	



CATEGORY	A	B	C	D
S-ILS 4R	CAT II RA 99/12 100 DA 118			
S-ILS 4R	CAT III RVR 06			

CATEGORY II & III ILS - SPECIAL AIRCREW  
& AIRCRAFT CERTIFICATION REQUIRED

