
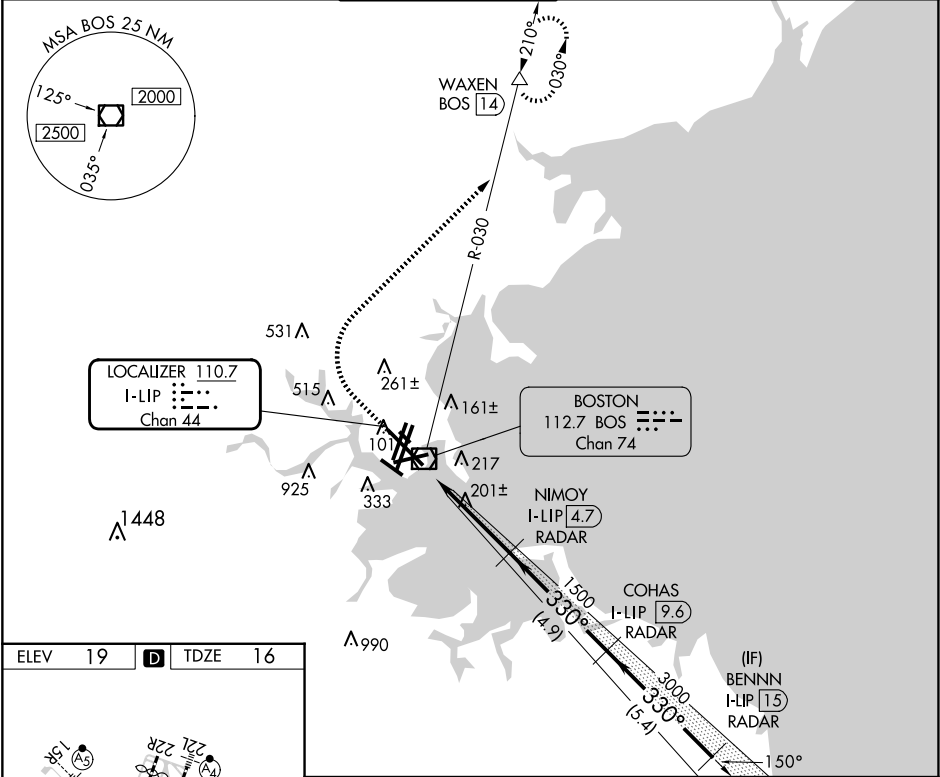


LOC/DME I-LIP 110.7 Chan 44		APP CRS 330°	Rwy Idg 10083 TDZE 16 Apt Elev 19	ILS RWY 33L (SA CAT I) GENERAL EDWARD LAWRENCE LOGAN INTL (BOS)			
RADAR required for procedure entry. DME required.			ALSF-2 	MISSED APPROACH: Climb to 1500 then climbing right turn to 3000 on BOS VOR/DME R-030 to WAXEN/BOS 14 DME and hold.			
Requires specific OPSPEC, MSPEC, or LOA approval.							
D-ATIS 135.0	BOSTON APP CON 120.6 263.1	BOSTON TOWER 128.8 257.8 (WEST) 132.225 257.8 (EAST)		GND CON 121.75 121.9	CLNC DEL 121.65 257.8	CPDLC	



				VGSI and ILS glidepath not coincident (VGSI Angle 3.00/TCH 68).										
<table><tr><td>CATEGORY</td><td>A</td><td>B</td><td>C</td><td>D</td></tr><tr><td>S-ILS 33L</td><td colspan="4">RA 166/14 150 DA 166</td></tr></table>					CATEGORY	A	B	C	D	S-ILS 33L	RA 166/14 150 DA 166			
CATEGORY	A	B	C	D										
S-ILS 33L	RA 166/14 150 DA 166													
SA CATEGORY I ILS - SPECIAL AIRCREW & AIRCRAFT CERTIFICATION REQUIRED														