

LOC/DME I-LIP	APP CRS	Rwy Idg	10083
<u>110.7</u>	330°	TDZE	16
Chan 44		Apt Elev	19

ILS RWY 33L (CAT II & III)

GENERAL EDWARD LAWRENCE LOGAN INTL (BOS)

RADAR required for procedure entry. DME required.

T CAT II: RVR 1000 authorized with specific OPSPEC, MSPEC, or LOA approval and use of autoland or HUD to touchdown.

ALSF-2

MISSED APPROACH: Climb to 1500 then climbing right turn to 3000 on BOS VOR/DME R-030 to WAXEN/BOS 14 DME and hold.


D-ATIS 135.0	BOSTON APP CON 120.6 263.1	BOSTON TOWER 128.8 257.8 (WEST) 132.225 257.8 (EAST)	GND CON 121.75 121.9	CLNC DEL 121.65 257.8	CPDLC
-----------------	-------------------------------	--	-------------------------	--------------------------	-------

MISSED APCH FIX

WAXEN
BOS 14

WAXEN
BOS 14

LOCALIZER 110.7
I-LIP
Chan 44

BOSTON
2.7 BOS 
Chan 74

MSA BOS 25 NM

ELEV	19	D	TDZE	16
------	----	----------	------	----

TDZ/CL Rwy 4R, 15R and 33L
REIL Rwy 4L, 27 and 32
MIRL Rwy 15L-33R
HIRL Rwy 4L-22R, 4R-22L,
9-27, 14-32 and 15R-33L

BOSTON, MASSACHUSETTS

Amdt 5G 13JUN24

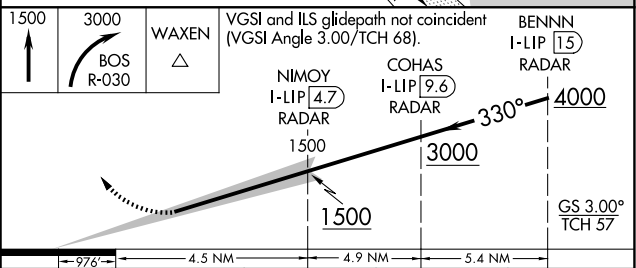
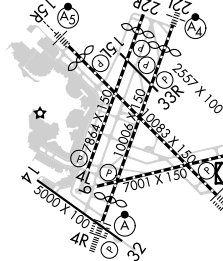
GENERAL EDWARD LAWRENCE LOGAN INTL (BOS)

42°22'N-71°00'W

ILS RWY 33L (CAT II & III)

NE-1, 10 JUL 2025 to 07 AUG 2025

NE-1, 10 JUL 2025 to 07 AUG 2025



CATEGORY	A	B	C	D
S-ILS 33L	CAT II RA 116/12 100 DA 116			
S-ILS 33L	CAT III RVR 06			

CATEGORY II & III ILS - SPECIAL AIRCREW
& AIRCRAFT CERTIFICATION REQUIRED