

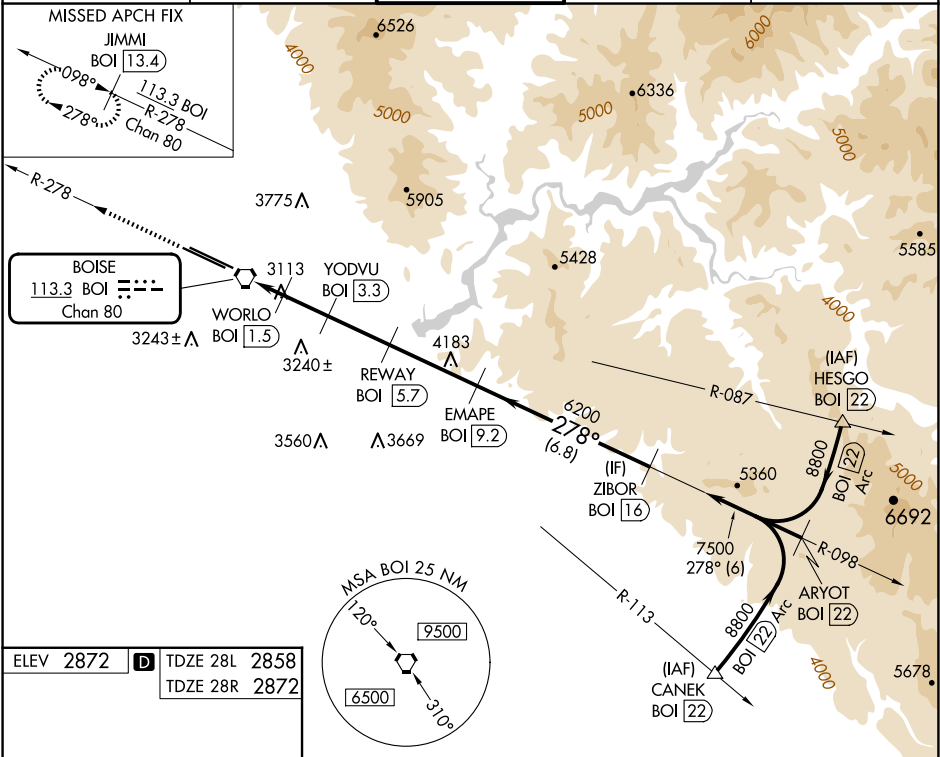
VORTAC BOI 113.3 Chan 80	APP CRS 278°	Rwy Ldg	28L	28R
		TDZE	9763	10000
		Apt Elev	2858	2872
			2872	2872

VOR Y or TACAN Y RWY 28L
BOISE AIR TRML/GOWEN FLD (BOI)

DME required.	MALSR Rwy 28L
Circling NA north of Rwy 10L-28R. For inop ALS, increase S-28L Cat E visibility to 1½ SM.	

MISSED APPROACH: Climb to 6000 on BOI VORTAC R-278 to JIMMI/13.4 DME and hold.

D-ATIS 123.9 290.4	BIG SKY APP CON 119.6 269.4	BOISE TOWER 118.1 257.8	GND CON 121.7 348.6	CLNC DEL 125.9 323.2
------------------------------	---------------------------------------	-----------------------------------	-------------------------------	--------------------------------



ELEV 2872	TDZE 28L 2858
	TDZE 28R 2872

REIL Rwy 10L
TDZ/CL Rws 10R and 28L
HIRL Rws 10L-28R and 10R-28L

6000 ↑ BOI R-278	JIMMI BOI 13.4	YODVU BOI 3.3	REWAY BOI 5.7	EMAPE BOI 9.2	ZIBOR BOI 16	
BOI VORTAC	WORLO BOI 1.5					
0.8	0.6	0.9 NM	1.8 NM	2.4 NM	3.5 NM	6.8 NM
CATEGORY	A	B	C	D	E	
S-28L	3380/24	522 (600-½)	3380/55	522 (600-1)		
SIDESTEP 28R	3380-1⅜	508 (600-1⅜)	3380-1⅞ 508 (600-1⅞)	3380-2½	508 (600-2½)	
CIRCLING	3440-1	568 (600-1)	3640-2¼ 768 (800-2¼)	3820-3 948 (1000-3)	3880-3 1008 (1100-3)	