

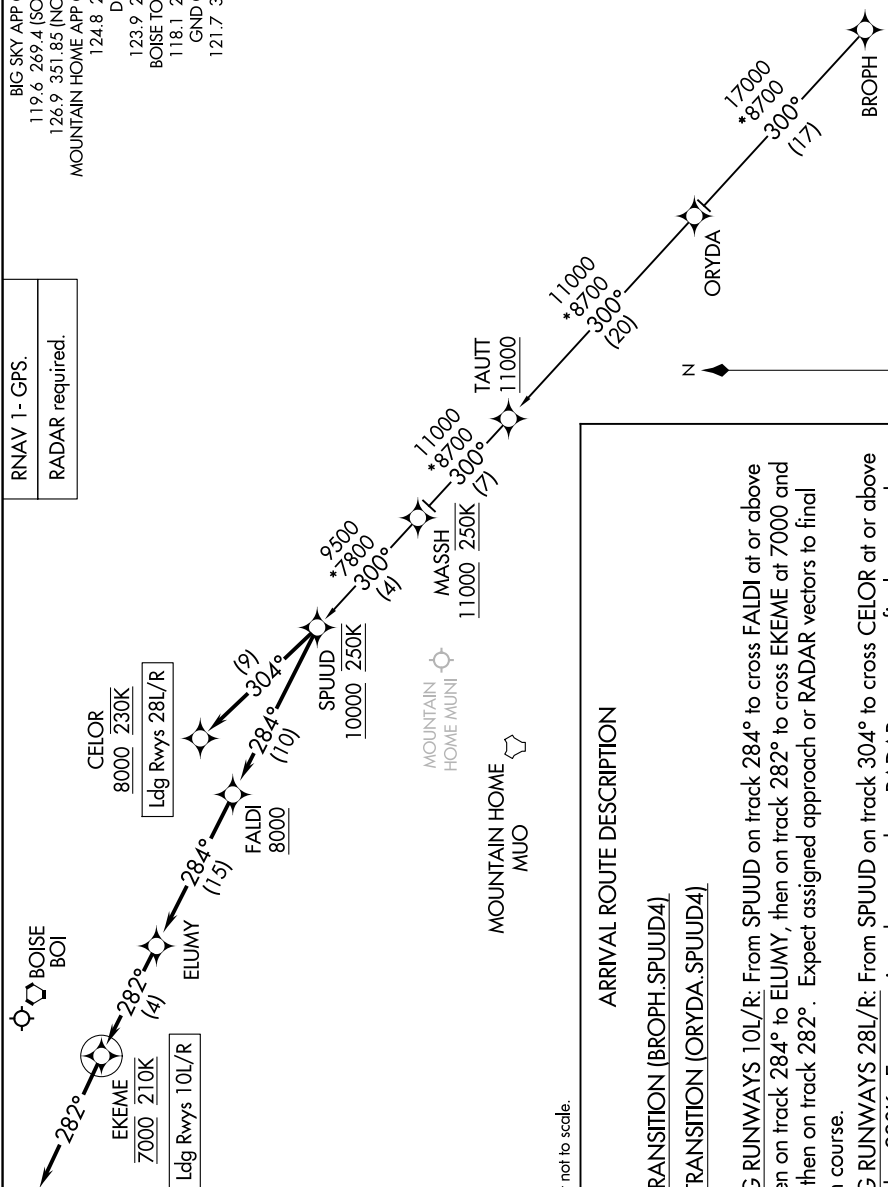
SPUUD FOUR ARRIVAL (RNAV)

AL-57 (FAA)

BOISE AIR TRML/GOWEN FLD (BOI)
BOISE, IDAHO

BIG SKY APP CON
119.6 269.4 (SOUTH)
126.9 351.85 (NORTH)
MOUNTAIN HOME APP CON ★
124.8 259.1
D-ATIS
123.9 290.4
BOISE TOWER
118.1 257.8
GND CON
121.7 348.6

RNAV 1 - GPS.
RADAR required



NOTE: Chart not to scale.

ARRIVAL ROUTE DESCRIPTION

BROPH TRANSITION (BROPH.SPUUD4)

LANDING RUNWAYS 10L/R: From SPUUD on track 284° to cross FALDI at or above 8000, then on track 284° to ELUMY, then on track 282° to cross EKEME at 7000 and at 210K, then on track 282°. Expect assigned approach or RADAR vectors to final approach course.

LANDING RUNWAYS 28L/R: From SPUUD on track 304° to cross CEIQR at or above 8000 and at 230K. Expect assigned approach or RADAR vectors to final approach course.

NW-1, 10 JUL 2025 to 07 AUG 2025

SPUUD FOUR ARRIVAL (RNAV)
(SPUUD.SPUUD4) 14JUL22

BOISE AIR TRML/GOWEN FLD (BOI)