

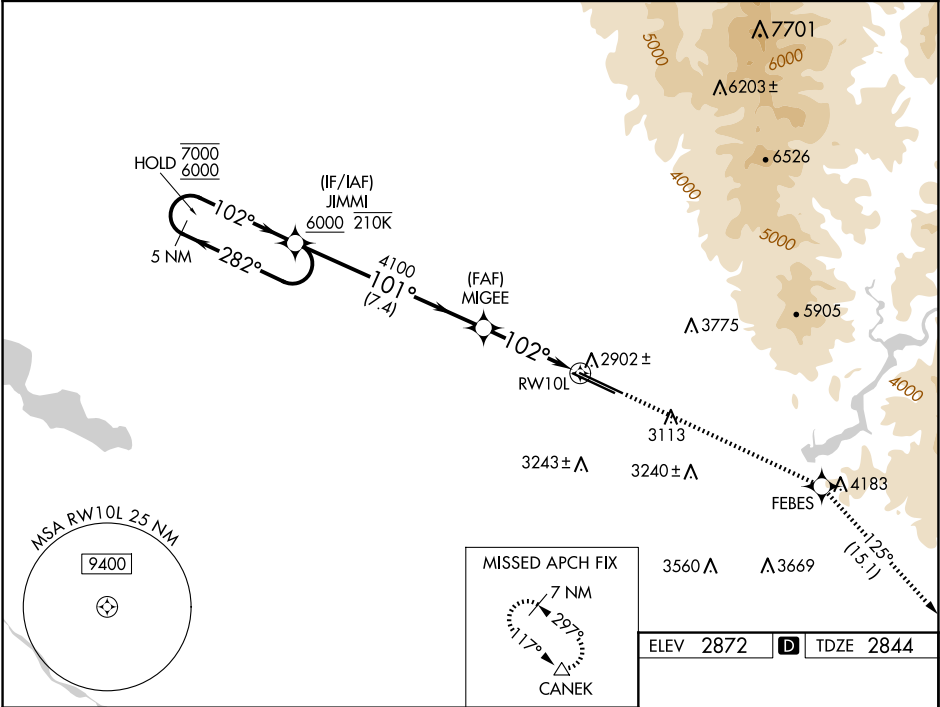
WAAS CH <b>78102</b> <b>W10A</b>	APP CRS <b>102°</b>	Rwy Ldg TDZE <b>2844</b> Apt Elev <b>2872</b>
--	------------------------	---

RNAV (GPS) Y RWY 10L

BOISE AIR TRML/GOWEN FLD (BOI)

RADAR required for procedure entry. RNP APCH - GPS.		MISSED APPROACH: Climb to 7300 direct FEBES then on track 125° to CANEK and hold.
<div><div><div>V</div><div>A</div></div></div>	Circling NA north of Rwy 10L-28R. For uncompensated Baro-VNAV systems, LNAV/VNAV NA below -14°C or above 54°C.	

D-ATIS <b>123.9 290.4</b>	BIG SKY APP CON <b>119.6 269.4</b>	BOISE TOWER <b>118.1 257.8</b>	GND CON <b>121.7 348.6</b>	CLNC DEL <b>125.9 323.2</b>
------------------------------	---------------------------------------	-----------------------------------	-------------------------------	--------------------------------



5 NM Holding Pattern		JIMMI	7300	FEBES	CANEK
GP 3.00° TCH 53		7.4 NM	2.5 NM	1.4 NM	1.4 NM to RW10L
CATEGORY	A	B	C	D	
LPV DA	3044-¾ 200 (200-¾)				
LNAV/VNAV DA	3197-1 353 (400-1)				
LNAV MDA	3320-1 476 (500-1)		3320-1⅜ 476 (500-1⅜)		
CIRCLING	3440-1 568 (600-1)		3640-2¼ 768 (800-2¼)		3820-3 948 (1000-3)

