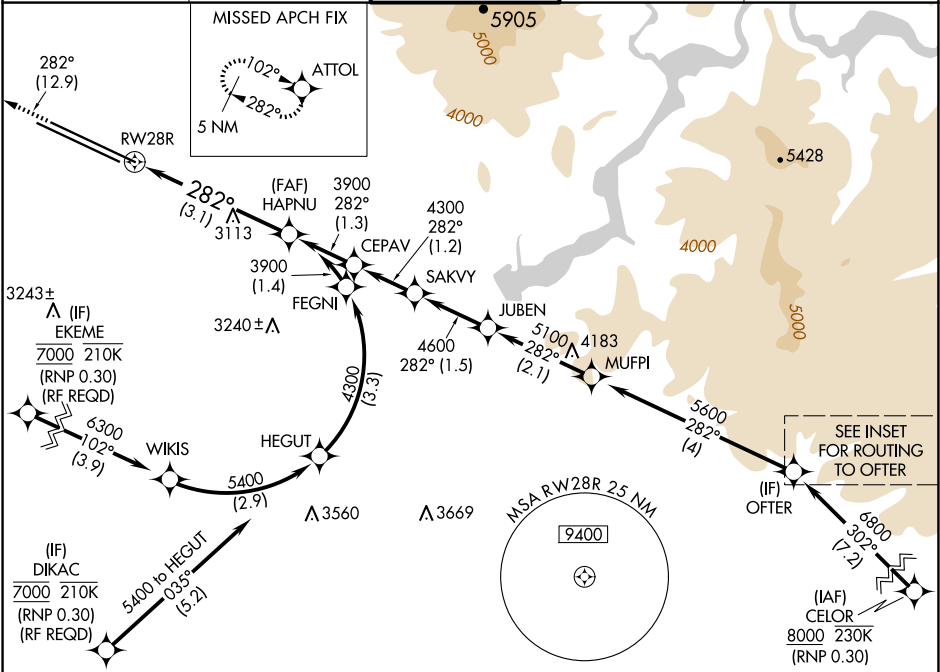


APP CRS	Rwy Ldg	10000
282°	TDZE	2872
	Apt Elev	2872

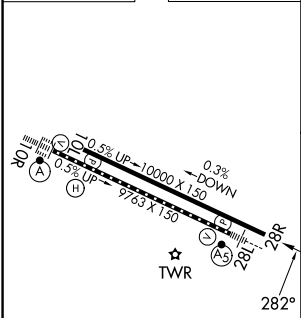
RNAV (RNP) Z RWY 28R
BOISE AIR TRML/GOWEN FLD (BOI)

RNP AR APCH.	MISSED APPROACH: Climb to 6000 on track 282° to ATTOL and hold, continue climb-in-hold to 6000.
▼ For uncompensated Baro-VNAV systems, procedure NA below -15°C or above 54°C.	

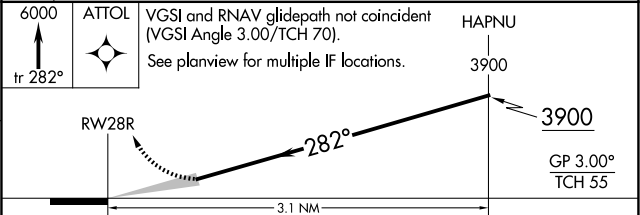
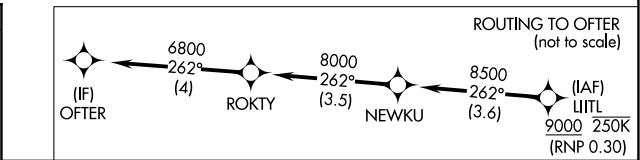
D-ATIS 123.9 290.4	BIG SKY APP CON 119.6 269.4	BOISE TOWER 118.1 257.8	GND CON 121.7 348.6	CLNC DEL 125.9 323.2
-----------------------	--------------------------------	----------------------------	------------------------	-------------------------



ELEV 2872	D	TDZE 2872
-----------	---	-----------



REIL Rwy 10L	
TDZ/CL Rwy 10R and 28L	
HIRL Rwy 10L-28R and 10R-28L	



CATEGORY	A	B	C	D
RNP 0.15 DA	3204-1	332 (400-1)		
RNP 0.30 DA	3303-1¼	431 (500-1¼)		

AUTHORIZATION REQUIRED