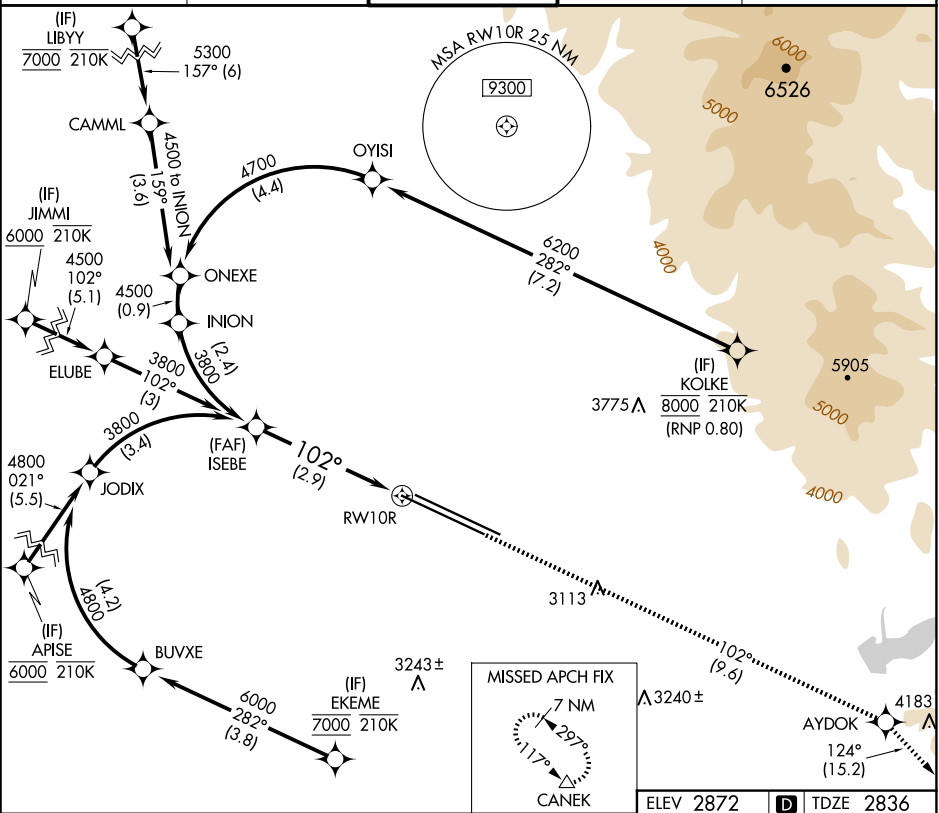


APP CRS	Rwy Ldg	9763
102°	TDZE	2836
	Apt Elev	2872

RNAV (RNP) Z RWY 10R

BOISE AIR TRML/GOWEN FLD (BOI)

RNP AR APCH - GPS.		ALSF-2	MISSED APPROACH: Climb to 7300 on track 102° to AYDOK and on track 124° to CANEK and hold.	
For uncompensated Baro-VNAV systems, procedure NA below -14°C or above 54°C.				
D-ATIS	BIG SKY APP CON	BOISE TOWER	GND CON	CLNC DEL
123.9 290.4	119.6 269.4	118.1 257.8	121.7 348.6	125.9 323.2



ISEBE

3800

3800

GP 3.00°

TCH 58

7300

AYDOK

CANEK

tr 102°

tr 124°

△

VGSI and RNAV glidepath not coincident

(VGSI Angle 3.00/TCH 64)

RW10R

See planview for multiple IF locations.

2.9 NM

CATEGORY	A	B	C	D
RNP 0.30 DA	3219/35 383 (400-5%)			

AUTHORIZATION REQUIRED

ELEV 2872

TDZE 2836

REIL Rwy 10L

TDZ/CL Rws 10R and 28L

HIRL Rws 10L-28R and 10R-28L