

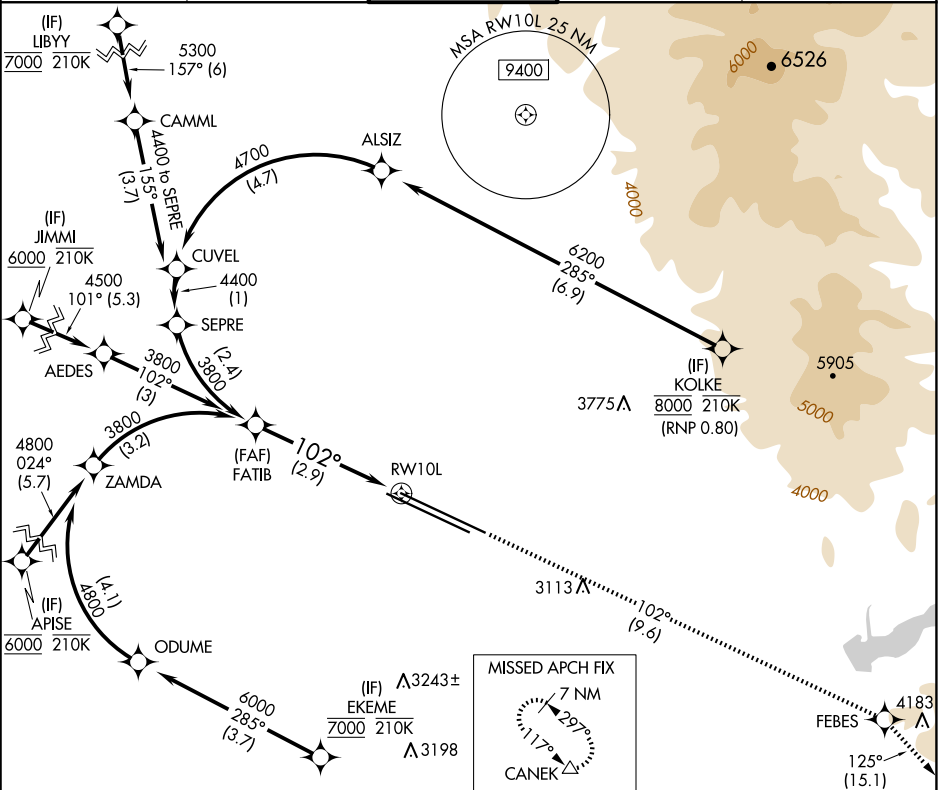
APP CRS	Rwy Ldg	10000
102°	TDZE	2844
	Apt Elev	2872

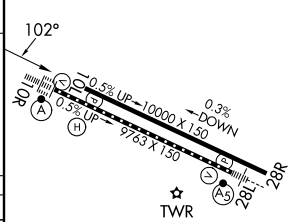
RNAV (RNP) Z RWY 10L

BOISE AIR TRML/GOWEN FLD (BOI)

RNP AR APCH - GPS.	MISSED APPROACH: Climb to 7300 on track 102° to FEBES and on track 125° to CANEK and hold.
For uncompensated Baro-VNAV systems, procedure NA below -1.4°C or above 54°C.	

D-ATIS	BIG SKY APP CON	BOISE TOWER	GND CON	CLNC DEL
123.9 290.4	119.6 269.4	118.1 257.8	121.7 348.6	125.9 323.2



FATIB		7300 ↑ tr 102°	FEBES ✦ tr 125°	CANEK △	ELEV 2872	D	TDZE 2844
3800		See planview for multiple IF locations.					
GP 3.00° TCH 53		RWY 10L					
3800		102°					
CATEGORY		A	B	C	D	REIL Rwy 10L TDZ/CL Rwy 10R and 28L HIRL Rwy 10L-28R and 10R-28L	
RNP 0.30 DA		3237-1⅛ 393 (400-1⅛)					
AUTHORIZATION REQUIRED							